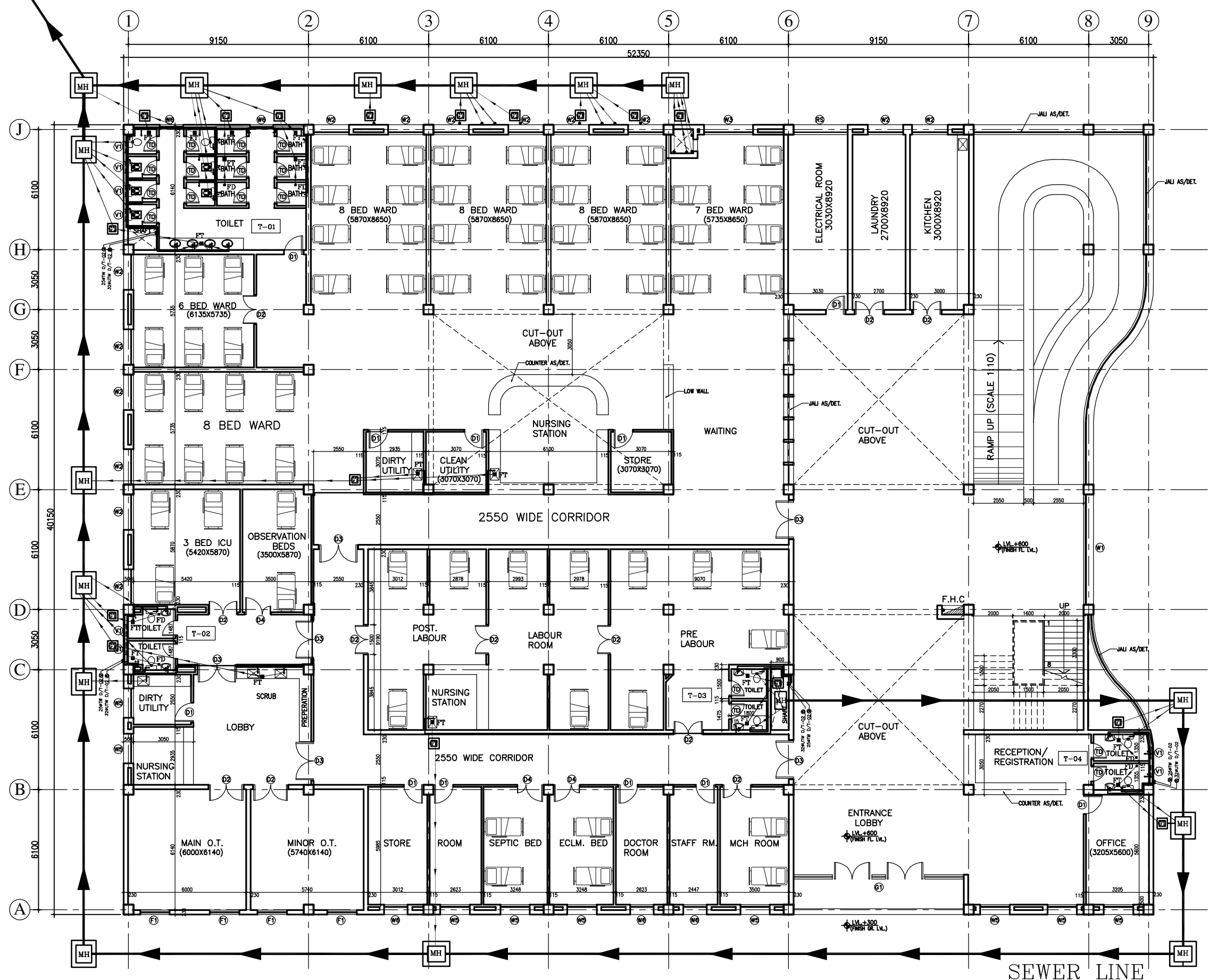


PHE & FIRE

DRAWINGS

1. BASED ON THIS DRAWING EXECUTING AGENCY WILL PREPARE SHOP DRAWING AFTER INCORPORATING THE CHANGES AS PER SITE CONDITION FOR THE APPROVAL OF ENGINEER-IN-CHARGE BEFORE START OF WORK.
 2. THE NO & LOCATION OF FIXTURES TO BE FINALIZED BEFORE EXECUTION WITH MEDICAL IN-CHARGE OF PROJECT.

This drawing with all its contents is the sole intellectual property of the Hospital Services Consultancy Corporation (India) Ltd. Copying of this drawing or part thereof or its use in any form whatsoever without the written permission of HSCC is prohibited.



LEGEND.

1	100 Ø CI SOIL & VENT PIPE
2	100Ø CI.WASTE & VENT PIPE
3	100Ø CI. SOIL PIPE
4	100Ø CI. WASTE PIPE
5	50Ø uPVC SOIL PIPE
6	40Ø UPVC WASTE PIPE
7	32Ø uPVC WASTE PIPE
8	Ø UTW DN.TAKE
9	Ø TW DN.TAKE
10	100 Ø S.W. PIPE
F.T	FLOOR TRAP 100x100
F.D	FLOOR DRAIN 50Ø
FCO	FLOOR CLEAN OUT
COP	CLEAN OUT PLUG
⊗	VALVE
MH	MANHOLE (900x800)mm
GT	GULLY TRAP(300x300)mm

REV	DATE	DESCRIPTION
REVISION		

PROJECT
 RMNCH PROJECT
 Proposed 50 Bedded Hospital (G+1) at CHATTISGARH

TITLE - PLUMBING & FIRE
 TENDER DRAWING

Ground Floor Plan

HSCC/D&E/BEMETARA/TD/PL-01
 Drawing No.

Job No.	Scale	Date
App by	Rev. by	Prep. by

HSCC (INDIA) LIMITED
 (A GOVERNMENT OF INDIA ENTERPRISES)
HSCC
 NEW DELHI INDIA

PRODUCED BY AN AUTODESK EDUCATIONAL PRODUCT

PRODUCED BY AN AUTODESK EDUCATIONAL PRODUCT

1. BASED ON THIS DRAWING EXECUTING AGENCY WILL PREPARE SHOP DRAWING AFTER INCORPORATING THE CHANGES AS PER SITE CONDITION FOR THE APPROVAL OF ENGINEER-IN-CHARGE BEFORE START OF WORK.
 2. THE NO & LOCATION OF FIXTURES TO BE FINALIZED BEFORE EXECUTION WITH MEDICAL IN-CHARGE OF PROJECT.

This drawing with all its contents is the sole intellectual property of the Hospital Services Consultancy Corporation (India) Ltd. Copying of this drawing or part thereof or its use in any form whatsoever without the written permission of HSCC is prohibited.

NOTES

LEGEND

1	100 Ø CI SOIL & VENT PIPE
2	100Ø CI.WASTE & VENT PIPE
3	100Ø CI. SOIL PIPE
4	100Ø CI. WASTE PIPE
5	50Ø uPVC SOIL PIPE
6	40Ø uPVC WASTE PIPE
7	32Ø uPVC WASTE PIPE
8	Ø UTW DN.TAKE
9	Ø TW DN.TAKE
10	100 Ø S.W. PIPE
F.T	FLOOR TRAP 100x100
F.D	FLOOR DRAIN 50Ø
FCO	FLOOR CLEAN OUT
COP	CLEAN OUT PLUG
⊗	VALVE
MH	MANHOLE (900x800)mm
GT	GULLY TRAP(300x300)mm

REV	DATE	DESCRIPTION
REVISION		

PROJECT
 RMNCH PROJECT
 Proposed 50 Bedded Hospital (G+1) at CHATTISGARH

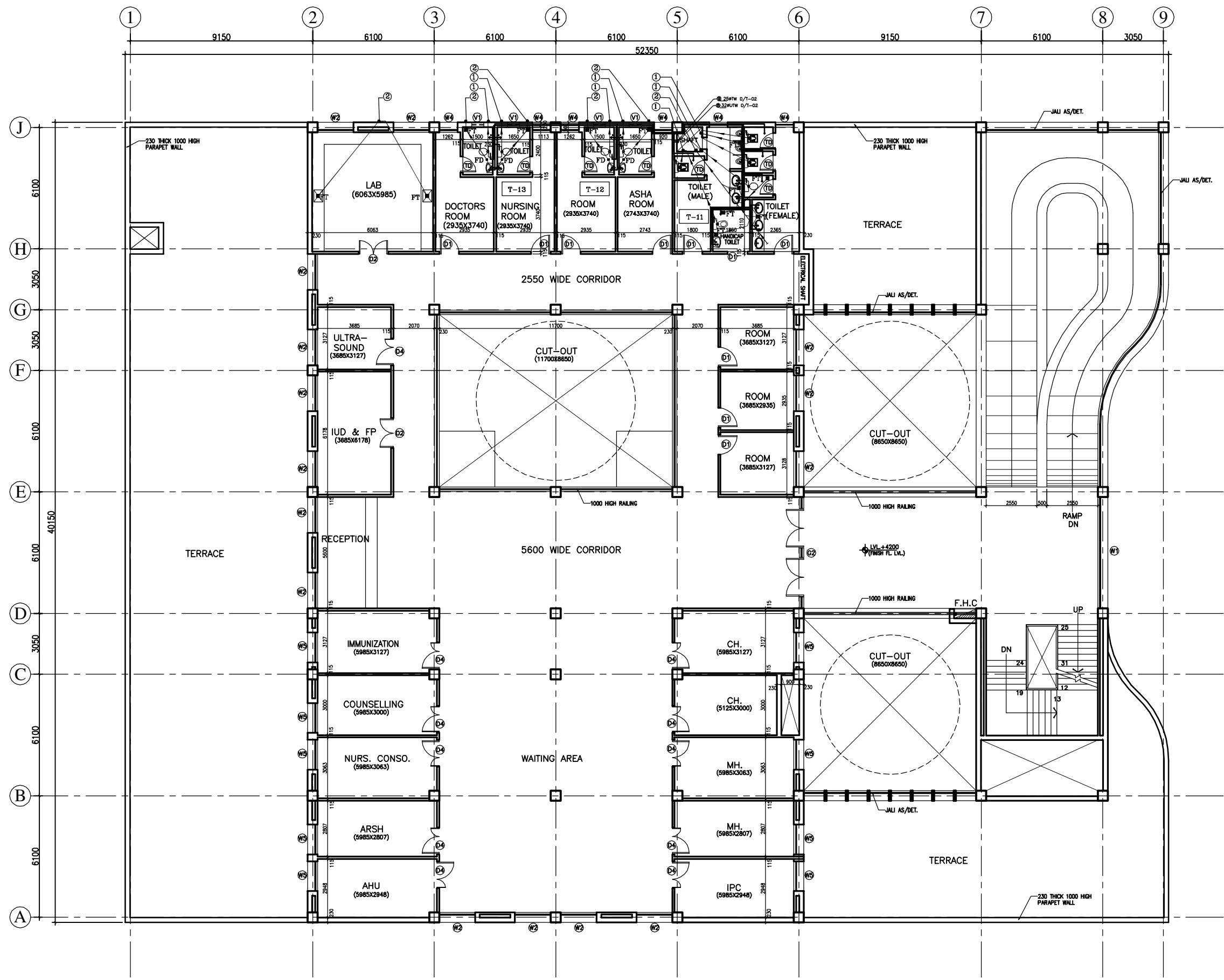
TITLE - PLUMBING & FIRE
 TENDER DRAWING

First Floor Plan

HSCC/D&E/BEMETARA/TD/PL-02
 Drawing No.

Job No.	Scale	Date
App by	Rev. by	Prep. by

HSCC (INDIA) LIMITED
 (A GOVERNMENT OF INDIA ENTERPRISES)
HSCC
 NEW DELHI INDIA

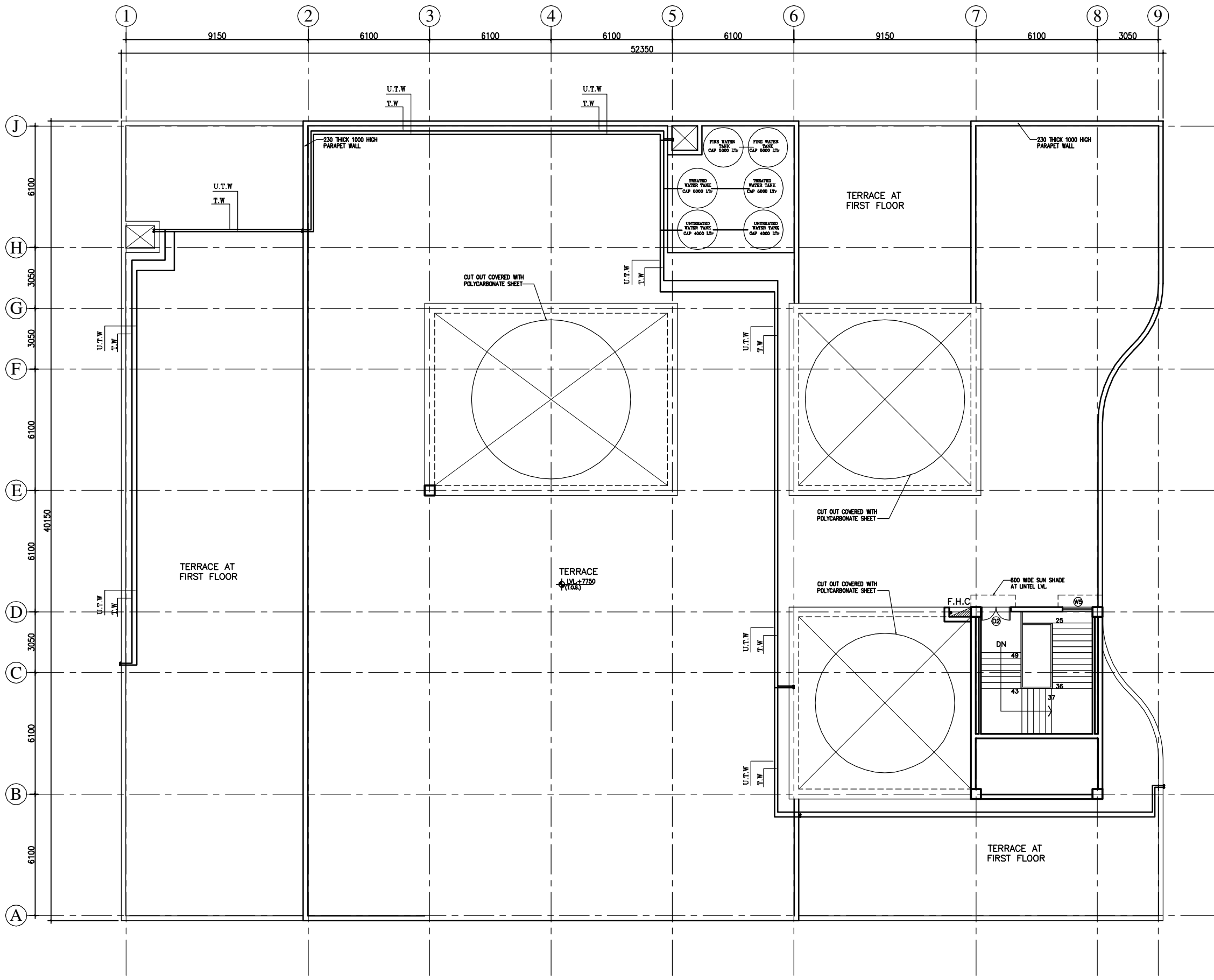


PRODUCED BY AN AUTODESK EDUCATIONAL PRODUCT

PRODUCED BY AN AUTODESK EDUCATIONAL PRODUCT

1. BASED ON THIS DRAWING EXECUTING AGENCY WILL PREPARE SHOP DRAWING AFTER INCORPORATING THE CHANGES AS PER SITE CONDITION FOR THE APPROVAL OF ENGINEER-IN-CHARGE BEFORE START OF WORK.
 2. THE NO & LOCATION OF FIXTURES TO BE FINALIZED BEFORE EXECUTION WITH MEDICAL IN-CHARGE OF PROJECT.

This drawing with all its contents is the sole intellectual property of the Hospital Services Consultancy Corporation (India) Ltd. Copying of this drawing or part thereof or its use in any form whatsoever without the written permission of HSCC is prohibited.



NOTES

LEGEND

1	100 Ø CI SOIL & VENT PIPE
2	100Ø CI.WASTE & VENT PIPE
3	100Ø CI. SOIL PIPE
4	100Ø CI. WASTE PIPE
5	50Ø uPVC SOIL PIPE
6	40Ø UPVC WASTE PIPE
7	32Ø uPVC WASTE PIPE
8	Ø UTW DN.TAKE
9	Ø TW DN.TAKE
10	100 Ø S.W. PIPE
F.T	FLOOR TRAP 100x100
F.D	FLOOR DRAIN 50Ø
FCO	FLOOR CLEAN OUT
COP	CLEAN OUT PLUG
⊗	VALVE
MH	MANHOLE (900x800)mm
GT	GULLY TRAP(300X300)mm

REV	DATE	DESCRIPTION
REVISION		

PROJECT
 RMNCH PROJECT
 Proposed 50 Bedded Hospital (G+1) at CHATTISGARH

TITLE - PLUMBING & FIRE
 TENDER DRAWING

Terrace Plan

HSCC/D&E/BEMETARA/TD/PL-03
 Drawing No.

Job No.	Scale	Date
App by	Rev. by	Prep. by

HSCC (INDIA) LIMITED
 (A GOVERNMENT OF INDIA ENTERPRISES)
HSCC
 NEW DELHI INDIA

PRODUCED BY AN AUTODESK EDUCATIONAL PRODUCT

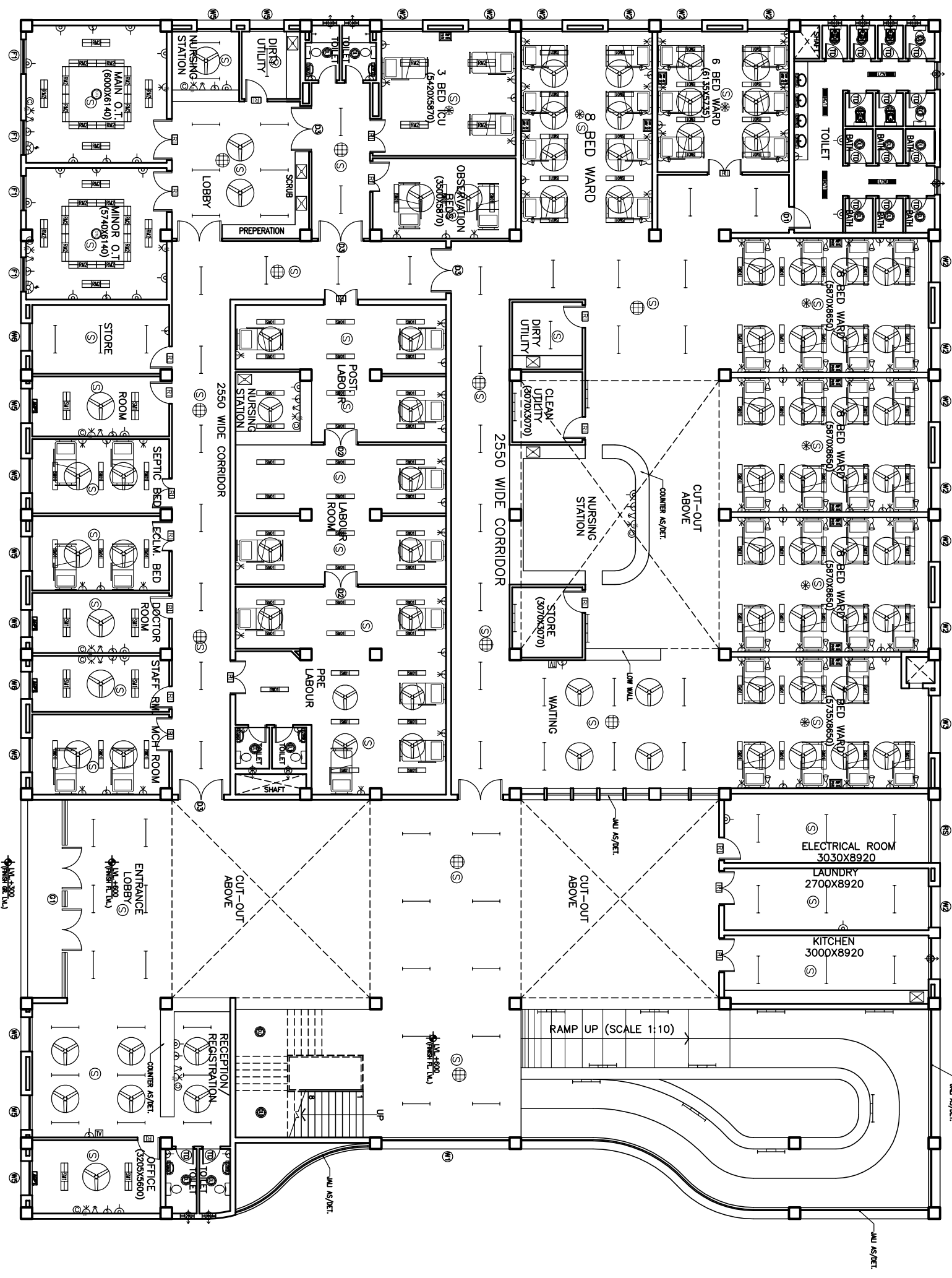
PRODUCED BY AN AUTODESK EDUCATIONAL PRODUCT

ELECTRICAL

DRAWINGS

A B C D E F G H J

1 2 3 4 5 6 7 8 9



GROUND FLOOR PLAN

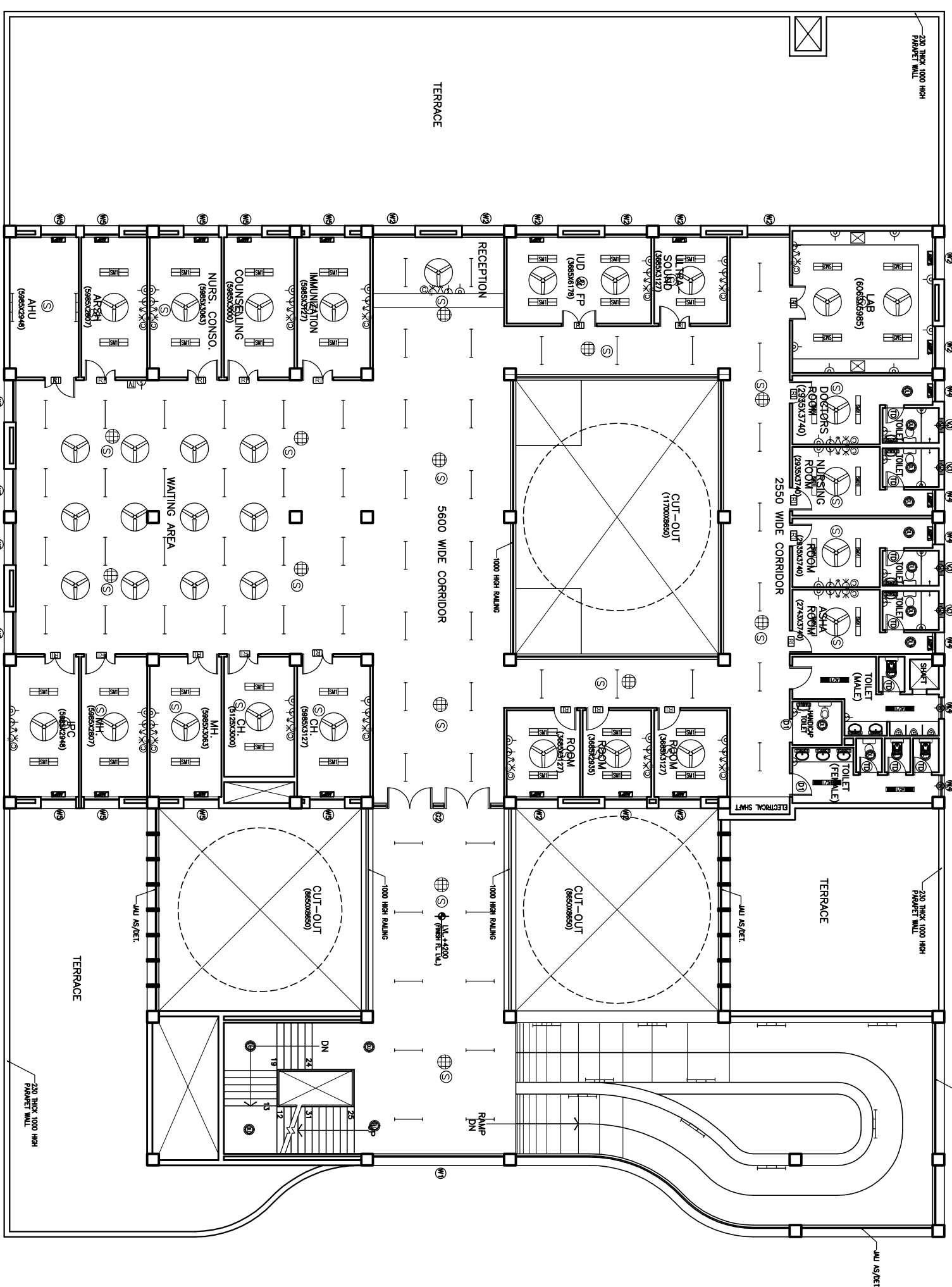
NOTES

The drawing with all its contents is the property of the Hospital Services Corporation (HSCC) Ltd. Copying of this drawing for any other use without the written permission of HSCC is prohibited.

PROJECT		RMNCH PROJECT	
TITLE		Proposed 50 Bedded Hospital of CHATTISGARH	
MODEL PLANS (G+1)		TENDER DRAWING	
ELECTRICAL LAYOUT		(COVERED AREA=2050 SQ. MT.)	
Drawing No.		HSCC/D&E/CHATTISGARH/DELHI R-0	
Scale		1:50	
Date			
App. by		Rev. by	
Prep. by			

1 2 3 4 5 6 7 8 9

A B C D E F G H J



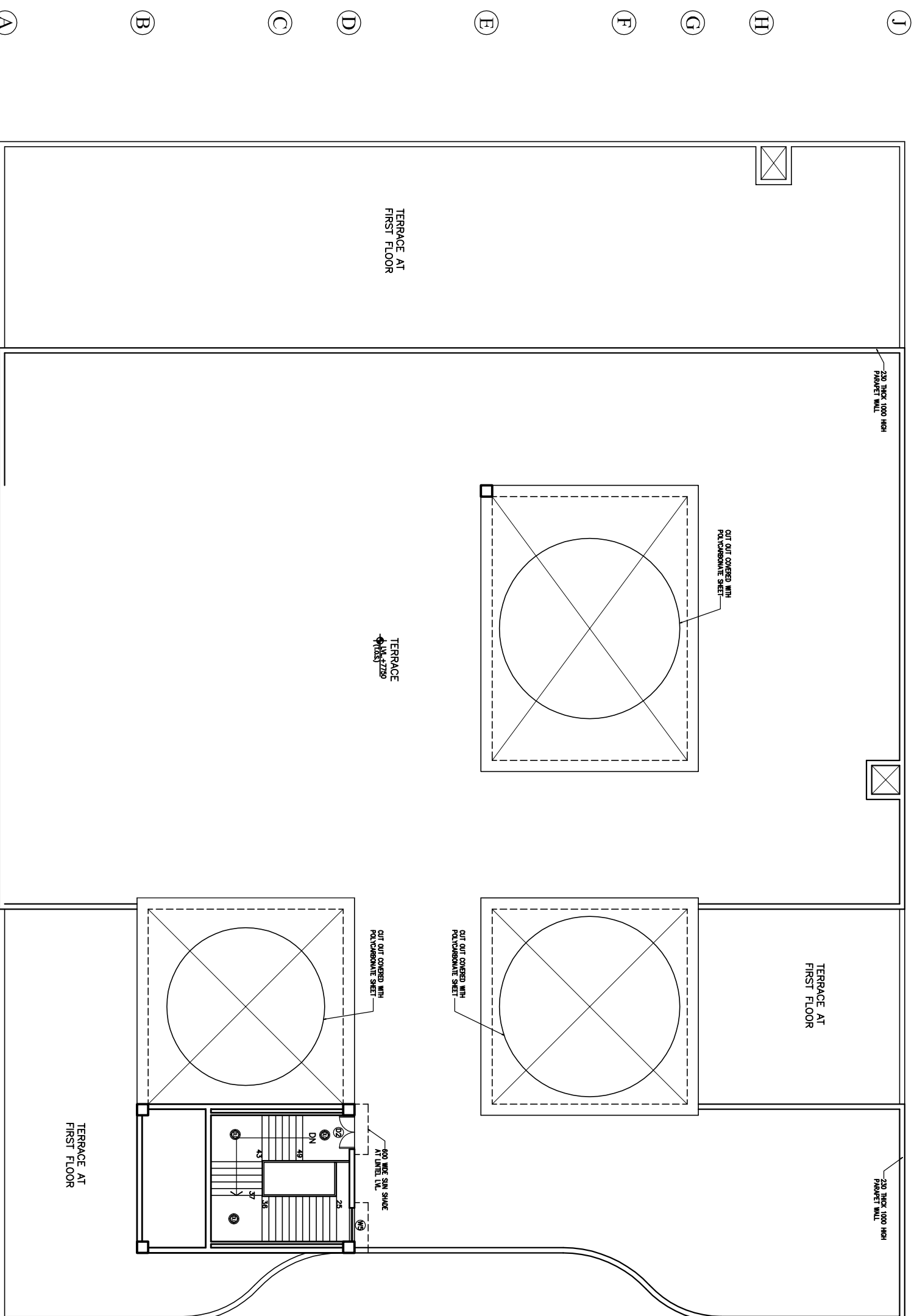
FIRST FLOOR PLAN

NOTES

The drawing with all its contents shall remain the property of the Consultant. Any use of the drawing for any purpose other than the one for which it was prepared without the written permission of HSCC is prohibited.

PROJECT			
RMNCH PROJECT			
Proposed 50 Bedded Hospital of CHATTISGARH			
TITLE			
MODEL PLANS (G+1) TENDER DRAWING First Floor Plan ELECTRICAL LAYOUT (COVERED AREA=1035 SQ. MT.)			
HSCC/D&E/CHATTISGARH/7D/EL-02 R-0			
Drawing No.			
HSCC/Scale		Date	
App by		Rev by	
Prep. by			

- 1 2 3 4 5 6 7 8 9



TERRACE PLAN

The drawing with all its contents is the sole property of the Hospital Services Consultancy Corporation (HSCC) Ltd. Copying of this drawing for any other purpose or use in any form whatsoever without the written permission of HSCC is prohibited.

NOTES

REV	DATE	DESCRIPTION

PROJECT
 RMNCH PROJECT
 Proposed
 50 Bedded Hospital
 of
 CHATTISGARH

TITLE
 MODEL PLANS (G+1)
 TENDER DRAWING
 Terrace Plan
 ELECTRICAL LAYOUT

HSCC/D&E/CHATTISGARH/TD/EL-03 R-0		Drawing No.	
HSCC/-	MNS	Scale	Date
Job No.			
App. by	Rev. by	Prep. by	

HVAC

DRAWINGS

This drawing with its contents is the sole intellectual property of the Hospital Services Consultancy Corporation (India) Ltd. Copying of this drawing or part thereof for its use in any form whatsoever without the written permission of HSCC is prohibited.

NOTES

DOOR AND WINDOW SCHEDULE

S.No	NAME	SIZE	GILL	LINTEL	REMARKS
1	TD	800X2150	000	2150	
2	D1	1000X2150	000	2150	
3	D3	1500X2150	000	2150	DOUBLE SHUTTER
4	D3	2000X2150	000	2150	DOUBLE SHUTTER
5	D4	1350X2150	000	2150	DOUBLE SHUTTER
RS		2760X3000	000	3000	BEAM BOTTOM
G1		8650X3000	0/150	3000	BEAM BOTTOM
G2		5600X3000	0/150	3000	BEAM BOTTOM
W1		5600X2100	900	3000	BEAM BOTTOM
W2		1800X2100	900	3000	
W3		2500X2100	900	3000	
W4		9200X2100	900	3000	
W5		1500X2100	900	3000	
W6		1200X2100	900	3000	
F1		1500X2100	900	3000	
V1		600X800	1550	2150	

REV	DATE	DESCRIPTION

REVISION

PROJECT

RMNCH PROJECT
Proposed
50 Bedded Hospital
at
CHHATTISGARH

TITLE

HVAC LAYOUT
GROUND FLOOR PLAN
(COVERED AREA=2050 SQ. MT.)

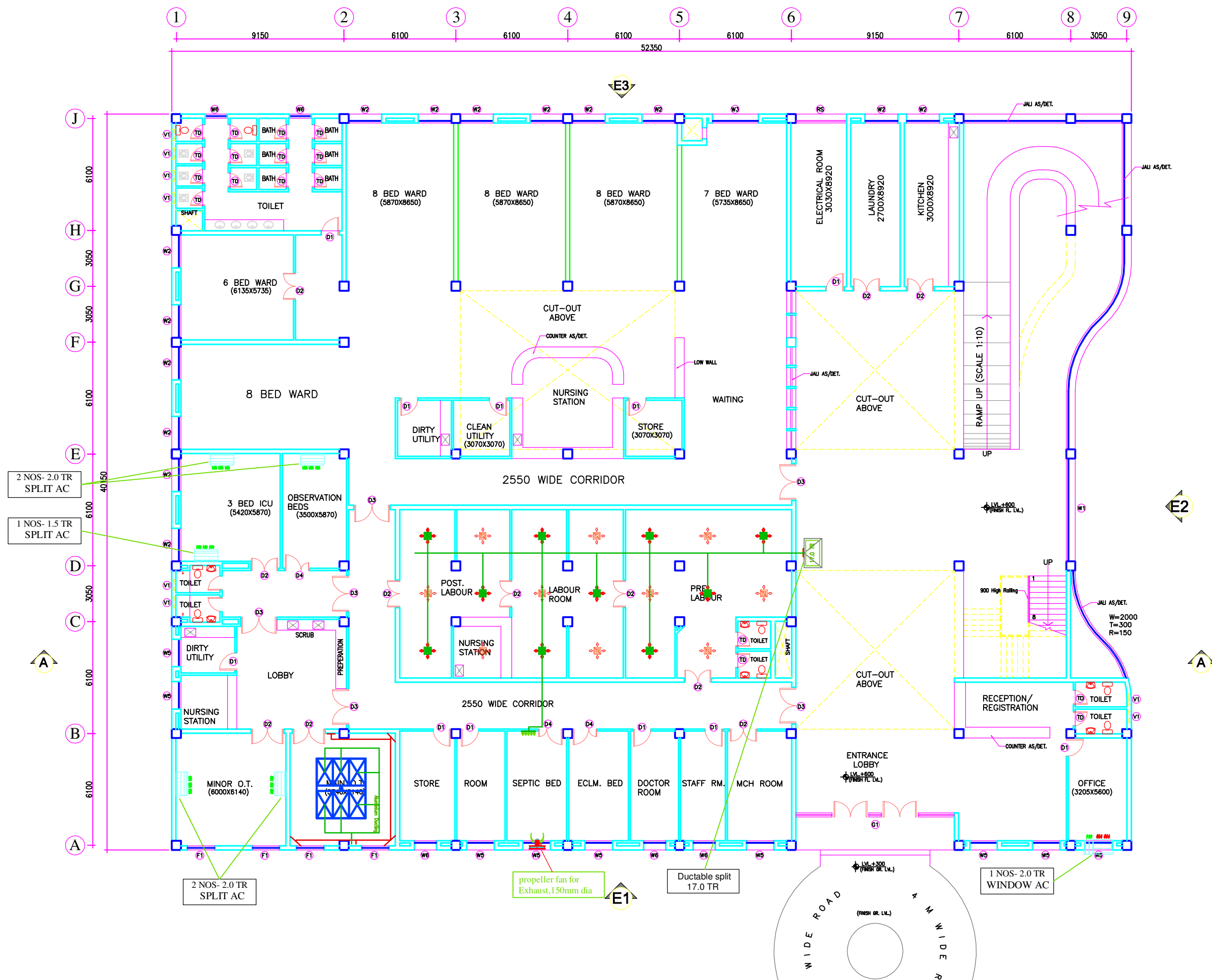
TENDER DRAWING

HSCC/D&E/HVAC/NRHM-CG-50/AC-01 R-0
Drawing No. Rev.

HSCC/- 1:100 01-04-2013
Job No. Scale Date

App by Rev. by Prep. by

HSCC (INDIA) LIMITED
(A GOVERNMENT OF INDIA ENTERPRISES)
HSCC
NEW DELHI INDIA



PRODUCED BY AN AUTODESK EDUCATIONAL PRODUCT

PRODUCED BY AN AUTODESK EDUCATIONAL PRODUCT

This drawing with its contents is the sole intellectual property of the Hospital Services Consultancy Corporation (India) Ltd. Copying of this drawing or part thereof for its use in any form whatsoever without the written permission of HSCC is prohibited.

NOTES

DOOR AND WINDOW SCHEDULE

S.No	NAME	SIZE	GLL	LINTEL	REMARKS
1	TD	800X2150	000	2150	
2	D1	1000X2150	000	2150	
3	D2	1500X2150	000	2150	DOUBLE SHUTTER
4	D3	2000X2150	000	2150	DOUBLE SHUTTER
5	D4	1350X2150	000	2150	DOUBLE SHUTTER
RS		2780X3000	000	3000	BEAM BOTTOM
G1		8650X3000	0/150	3000	BEAM BOTTOM
G2		5600X3000	0/150	3000	BEAM BOTTOM
W1		5600X2100	900	3000	BEAM BOTTOM
W2		1800X2100	900	3000	
W3		2500X2100	900	3000	
W4		920X2100	900	3000	
W5		1500X2100	900	3000	
W6		1200X2100	900	3000	
F1		1500X2100	900	3000	
V1		600X800	1550	2150	

REV	DATE	DESCRIPTION

REVISION

PROJECT

RMNCH PROJECT
Proposed
50 Bedded Hospital
at
CHHATTISGARH

TITLE

HVAC LAYOUT
FIRST FLOOR PLAN
(COVERED AREA=1035 SQ. MT.)

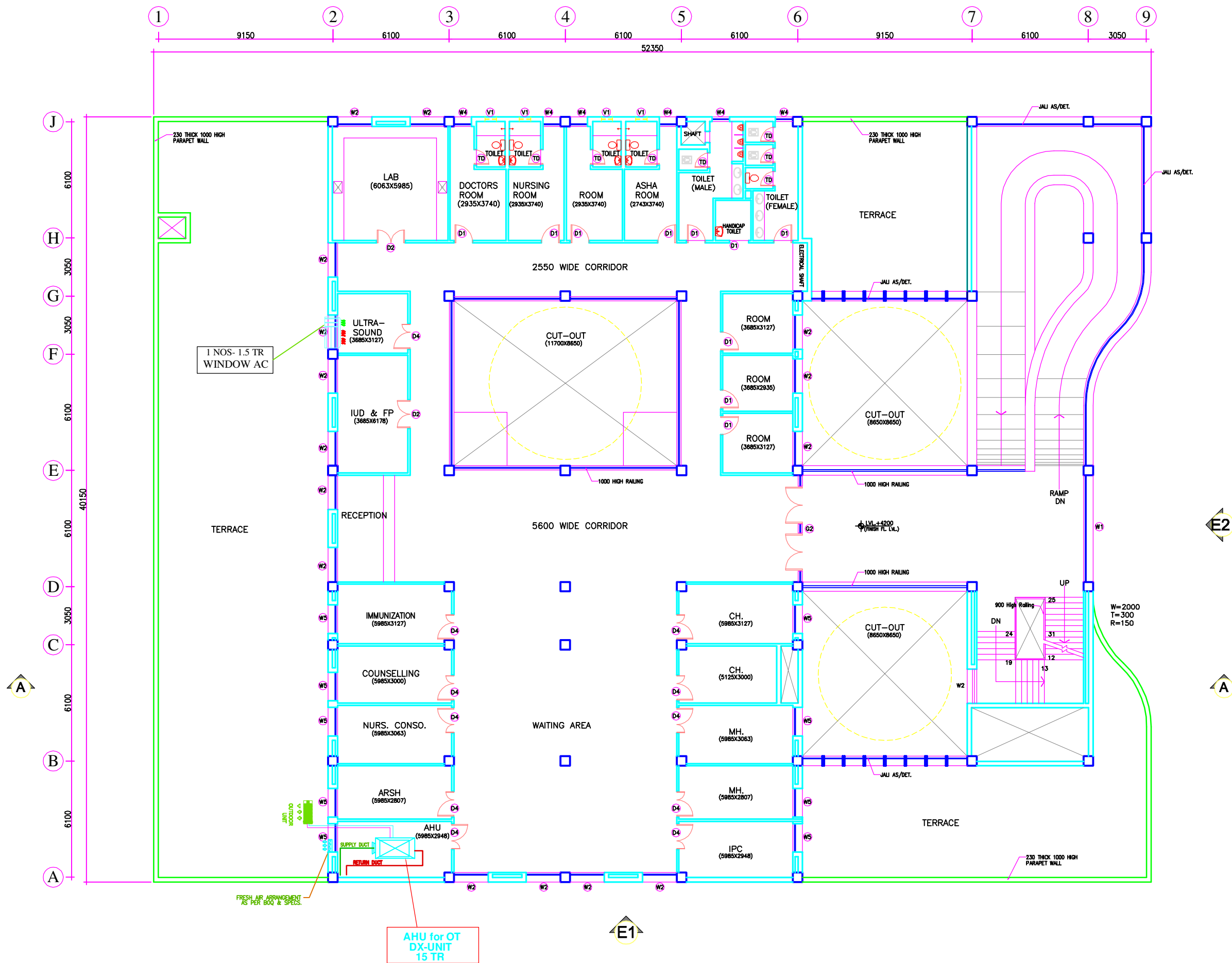
TENDER DRAWING

HSCC/D&E/HVAC/NRHM-CG-50/AC-02 R-0
Drawing No. Rev.

HSCC/- 1:100 01-04-2013
Job No. Scale Date

App by Rev. by Prep. by

HSCC (INDIA) LIMITED
(A GOVERNMENT OF INDIA ENTERPRISES)
HSCC
NEW DELHI INDIA



PRODUCED BY AN AUTODESK EDUCATIONAL PRODUCT

PRODUCED BY AN AUTODESK EDUCATIONAL PRODUCT