

**LADY HARDINGE MEDICAL COLLEGE & ASSOCIATED
HOSPITALS, NEW DELHI
UNDER
MINISTRY OF HEALTH & FAMILY WELFARE,
GOVERNMENT OF INDIA**

Tender

For

**Supply, installation, testing & commissioning of Hostel Furniture's &
associated miscellaneous works like minor civil, electrical, PHE works
etc. for Lady Hardinge Medical College & Associated Hospitals, New
Delhi
Volume-V**

TENDER DRAWINGS

AUGUST 2013

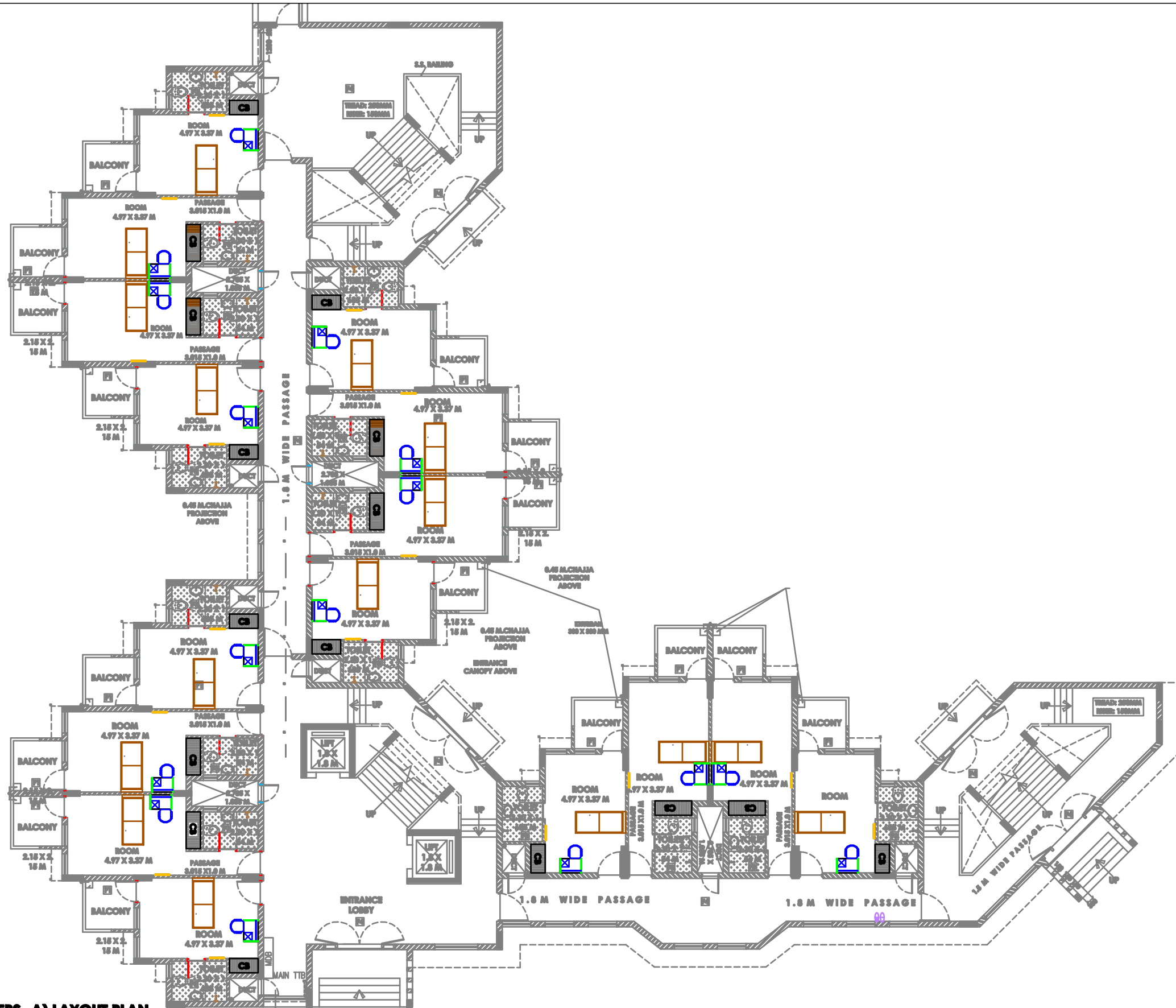


**HSCC (INDIA) LTD.
(CONSULTANTS & ENGINEERS FOR MEGA HOSPITALS & LABORATORIES)
E-6(A), sector-1, NOIDA(U.P) 201301 (India)**

Phone : 0120-2542436-40

Fax : 0120-2542447

PQ tender No. HSCC/LHMC/Fur/2013



GROUND FLOOR (RMO QUARTERS -A) LAYOUT PLAN



GROUND FLOOR (RMO QUARTERS -B) LAYOUT PLAN



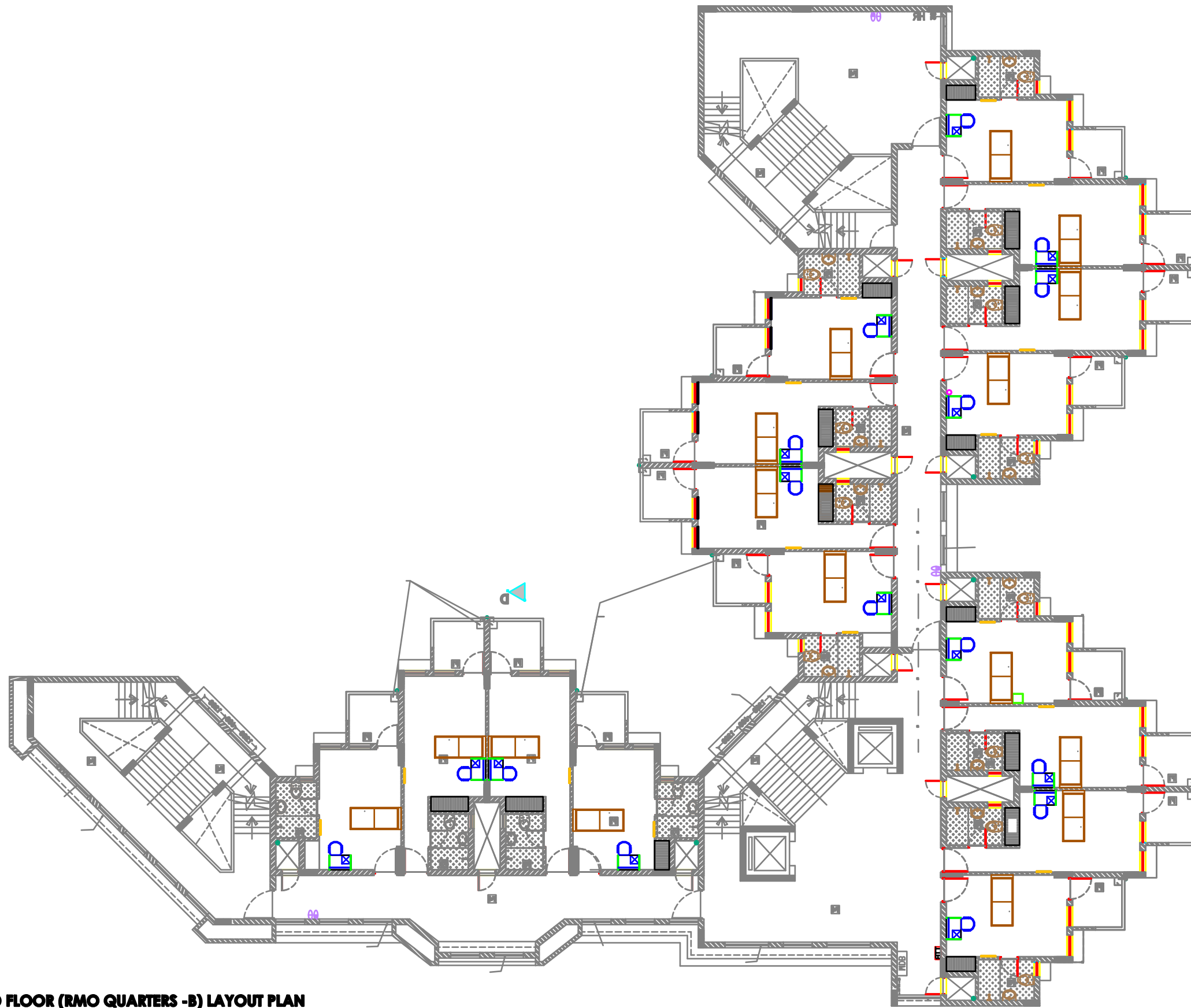
FIRST FLOOR (RMO QUARTERS -A) LAYOUT PLAN



FIRST FLOOR (RMO QUARTERS - B) LAYOUT PLAN



TYPICAL SECOND & THIRD FLOOR (RMO QUARTERS -A) LAYOUT PLAN



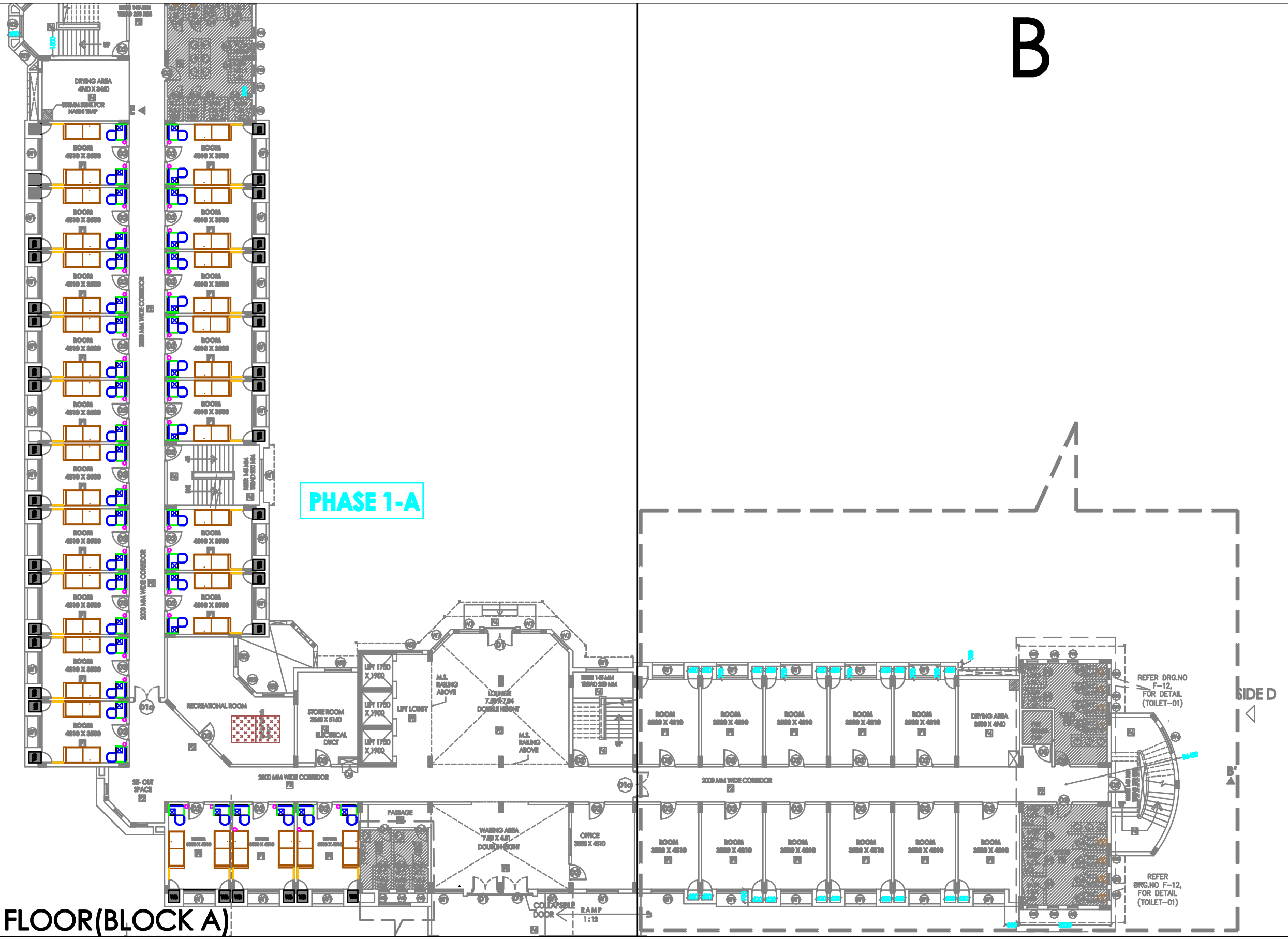
TYPICAL SECOND & THIRD FLOOR (RMO QUARTERS -B) LAYOUT PLAN

A

B

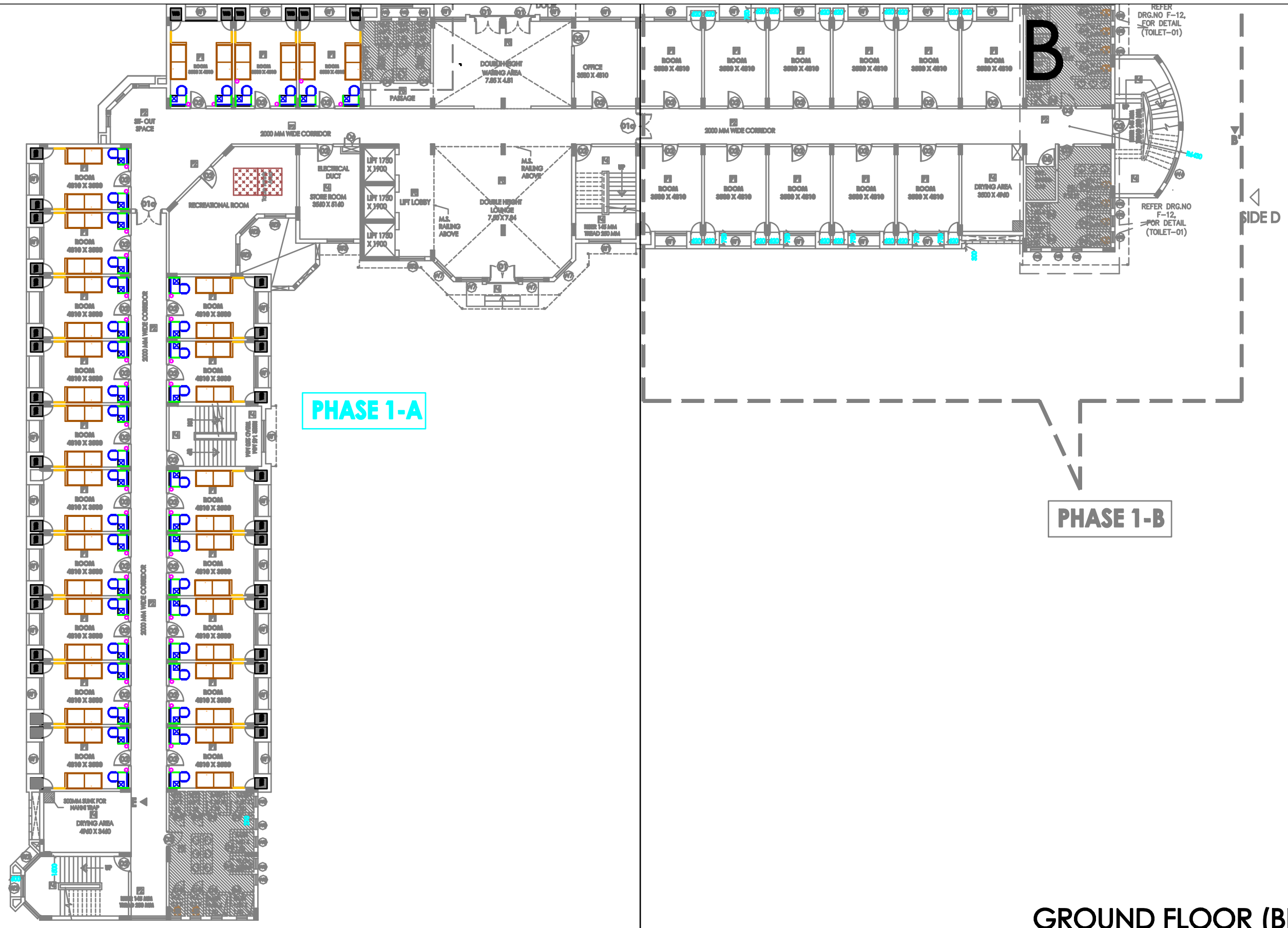
PHASE 1-A

GROUND FLOOR(BLOCK A)



A

B



PHASE 1-A

PHASE 1-B

SIDE D

GROUND FLOOR (BLOCK B)

A

B

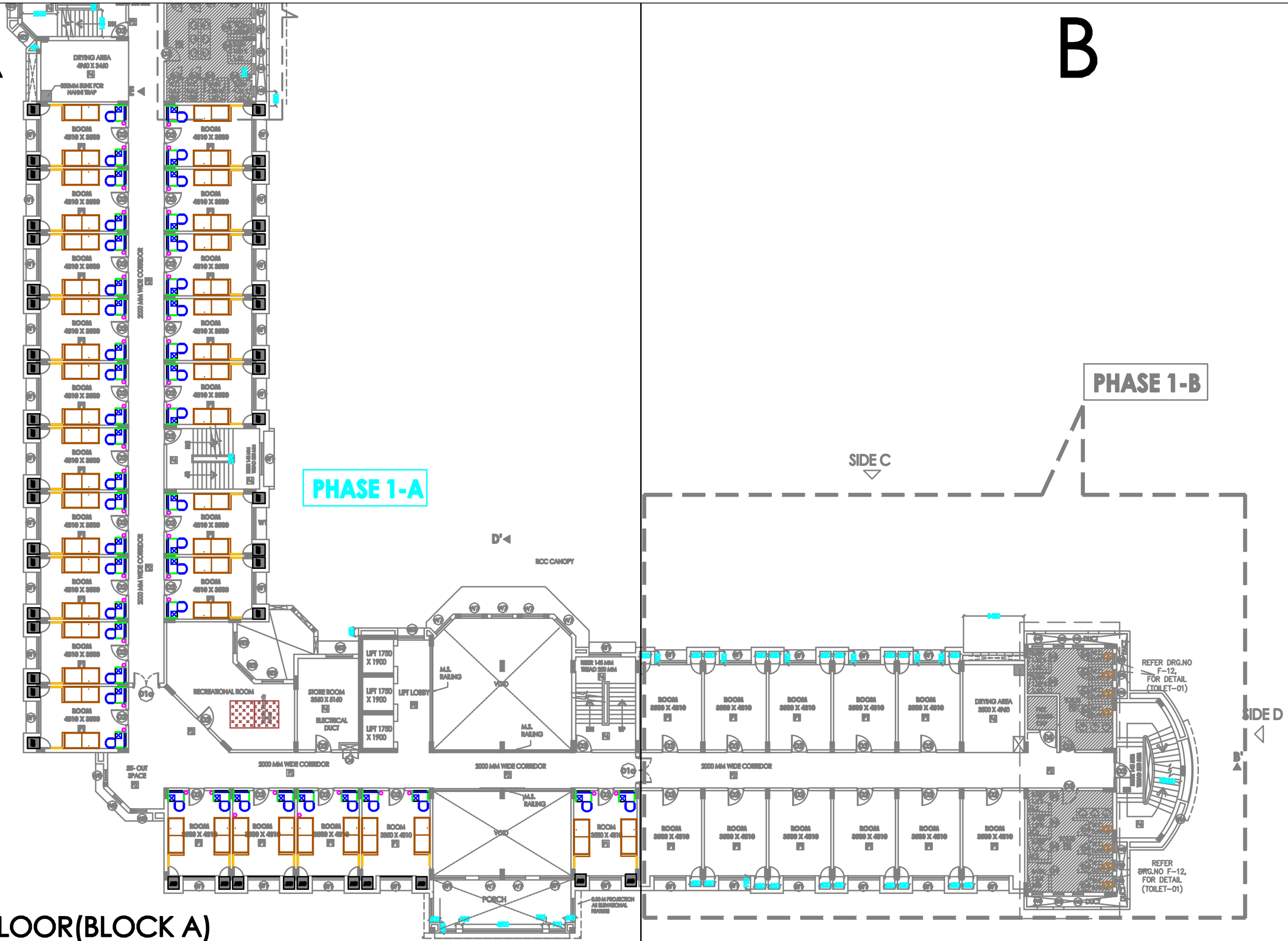
PHASE 1-A

PHASE 1-B

SIDE C

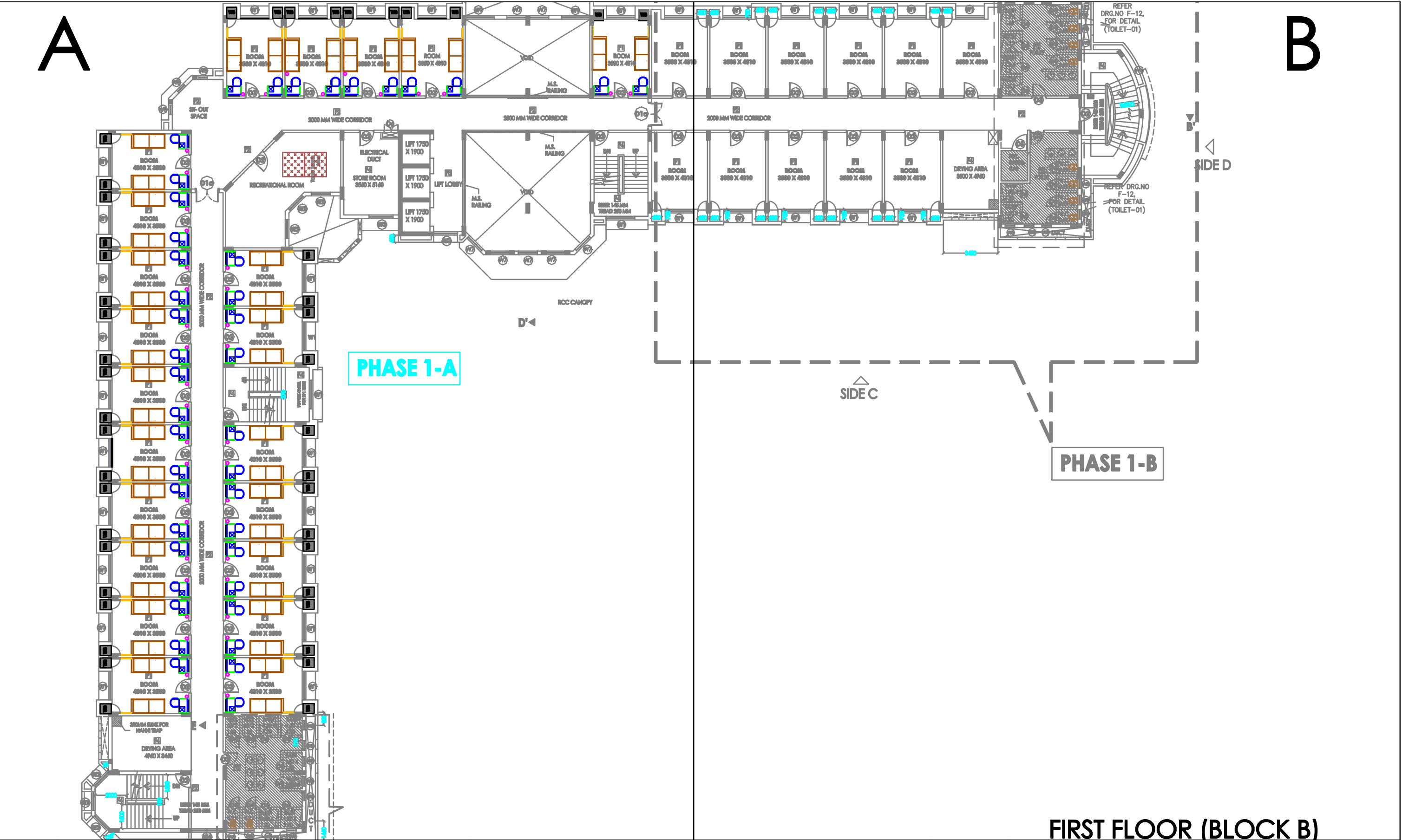
SIDE D

FIRST FLOOR (BLOCK A)



A

B



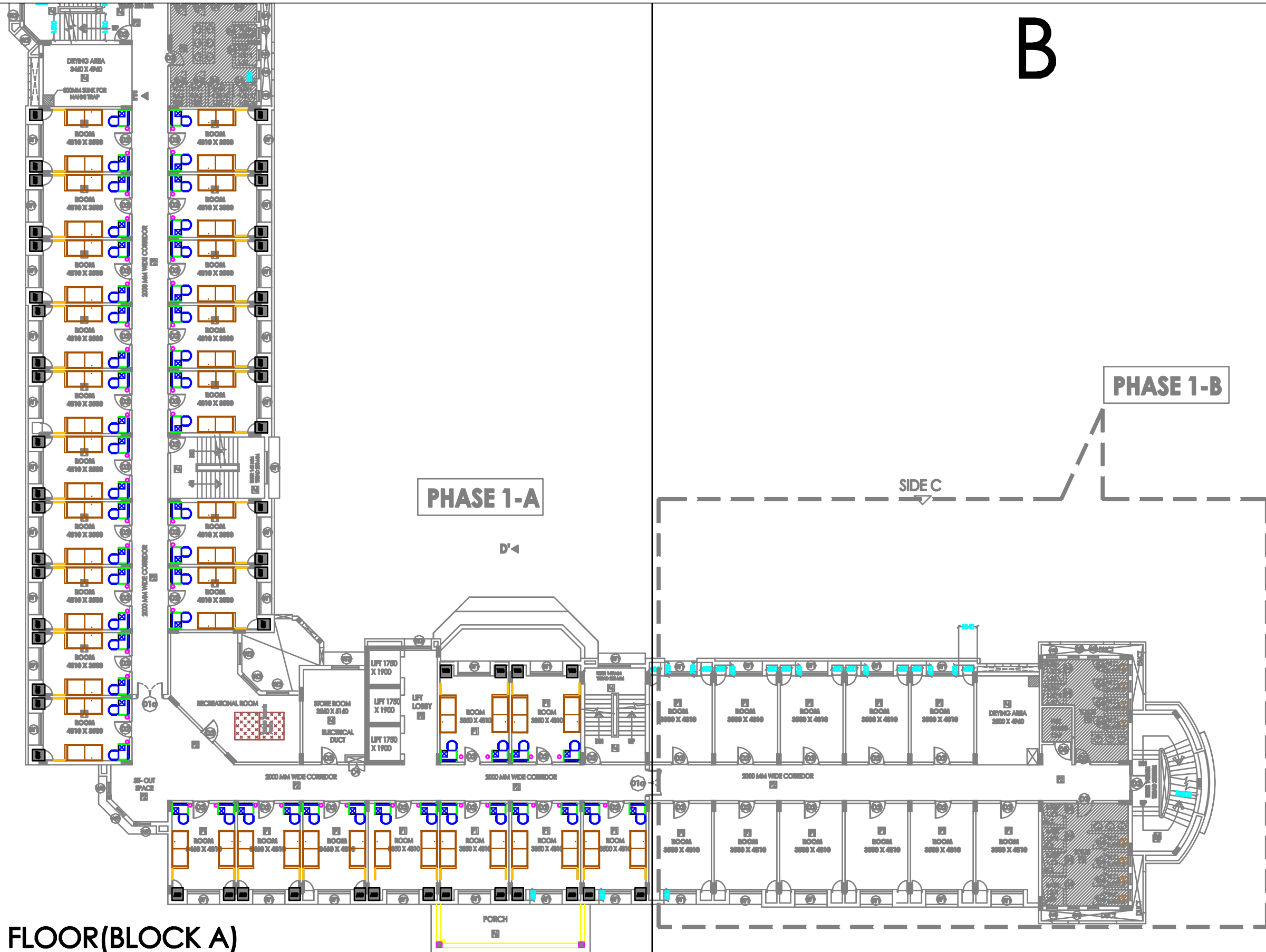
PHASE 1-A

PHASE 1-B

FIRST FLOOR (BLOCK B)

A

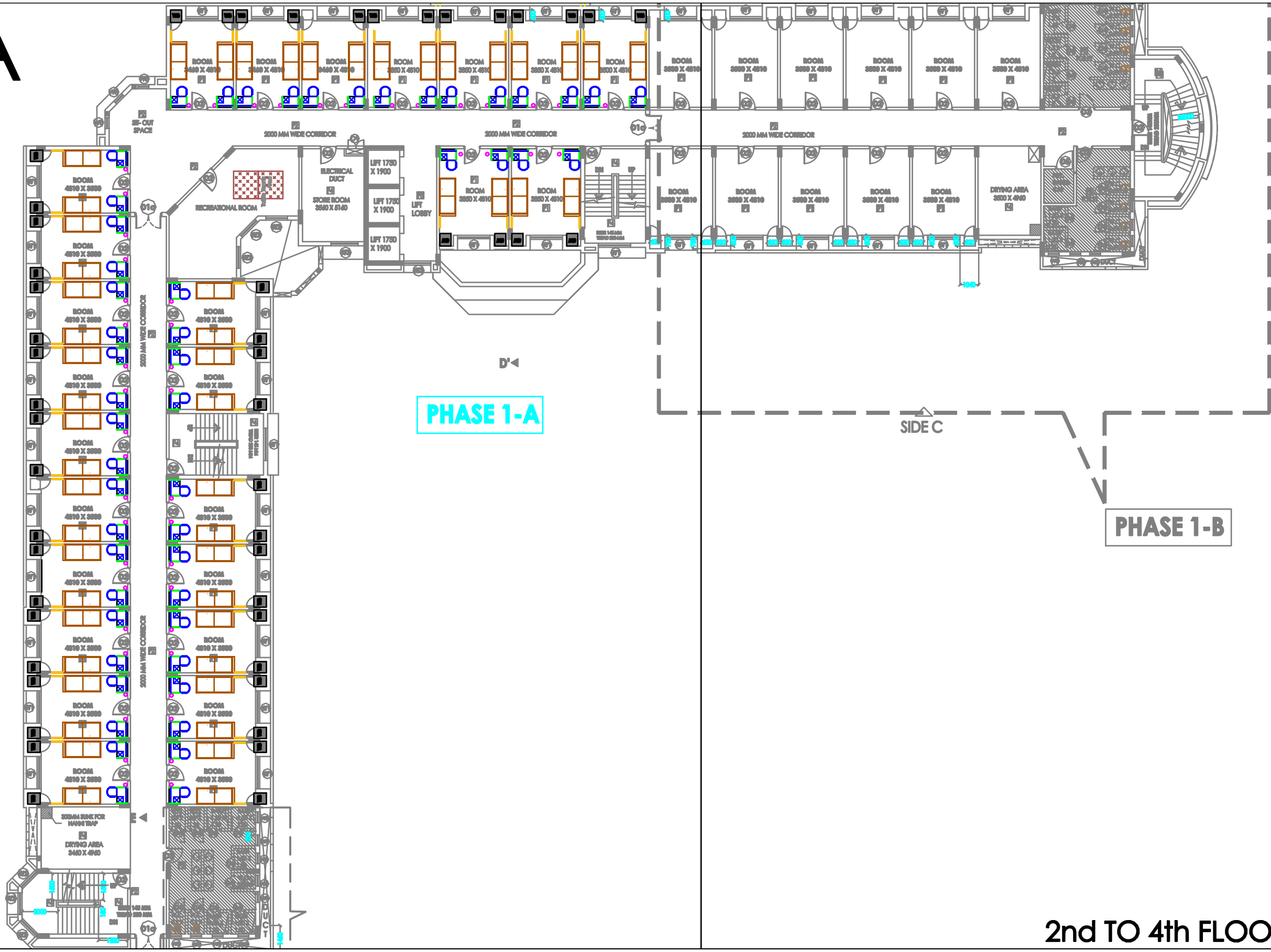
B



2nd TO 4th FLOOR(BLOCK A)

A

B

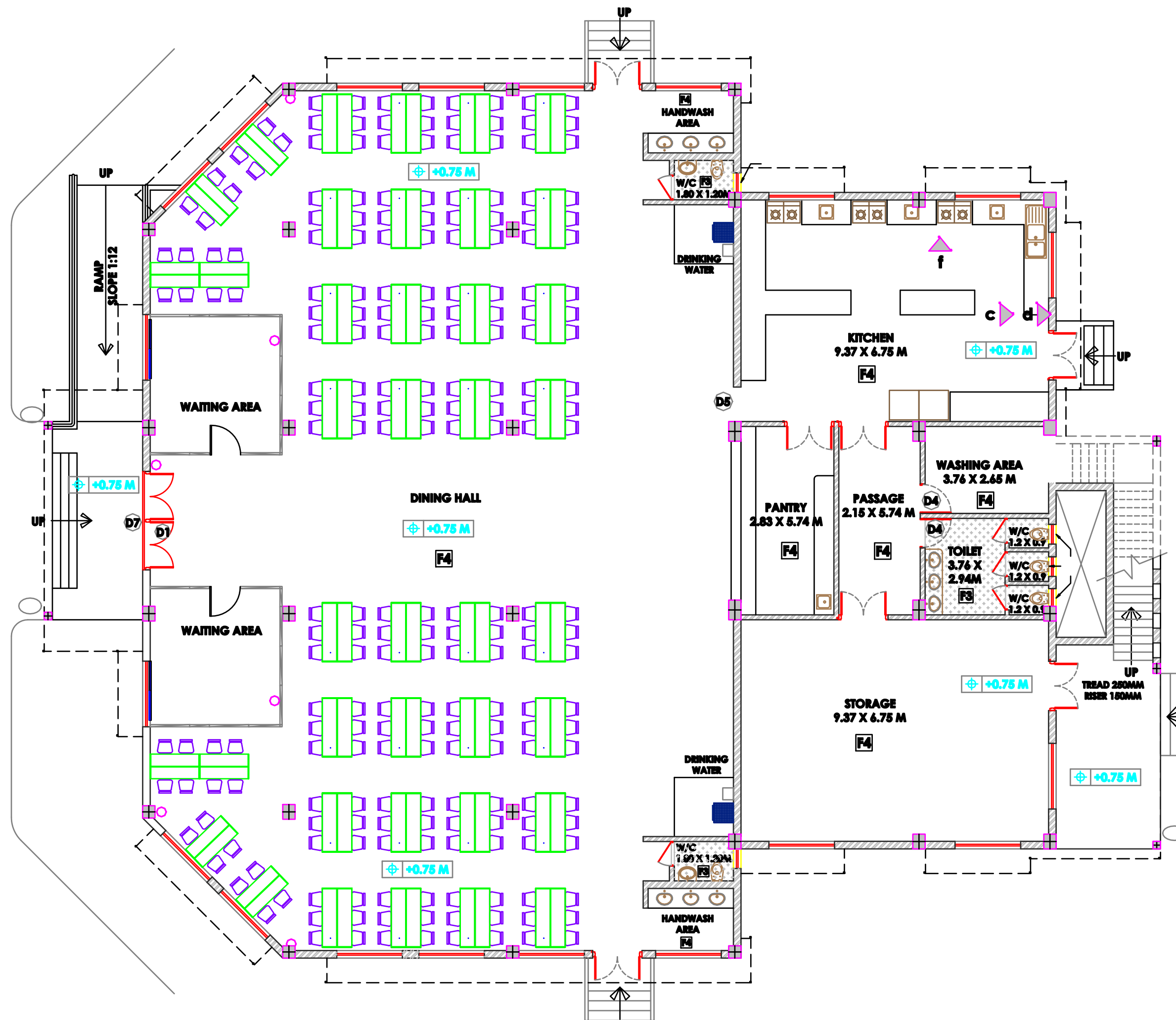


PHASE 1-A

PHASE 1-B

SIDE C

2nd TO 4th FLOOR(BLOCK B)



GROUND FLOOR (DINING HALL) LAYOUT PLAN