

## AMENDMENT No – I dated 05.07.16

**Subject: Amendment to the tender Enquiry Document**

**Ref: Tender Enquiry No.: HSCC/PUR/MEA - Myanmar/ Equipment/2015-16/02 dated 14.06.2016**

Bidders are requested to note the following amendment:

**Tender Clause No.9 of GCC – Delivery and Installation period:** Once the consignment is reached at the port/ Airport Myanmar, the time period from the arrival of the shipment at Port/ airport till the clearance of the consignment will be not included in the delivery and installation period given in the bid document under the clause No.9 of GCC. Once the shipment is reached, supplier has to submit the copy of cargo arrival notice to MEA, HSCC & consignee. The custom duty and the custom clearance charges at Myanmar airport/ port will be arranged by Government of Myanmar.

### Section – VIII Technical Specifications

**Package 4 - Low End Mobile X ray machine: 01No.**

Sr. No.	Tender Specification	Amended/ Read As
a.	<b>Point 3. X-Ray Tube:</b> Stationary/ Rotating Anode type Please specify the focal spot size, anode RPM, filtration provide by the tube.	<b>Point 3. X-Ray Tube:</b> Stationary/ Rotating Anode type Please specify the focal spot size, anode RPM (in case of Rotating anode type tube), filtration provide by the tube.

**Package 4 - 500mA high frequency unit with image intensifier: 01No.**

Sr. No.	Tender Specification	Amended/ Read As
	<b>Point 8.</b> Collimator with adjustable copper filters.	<b>Point 8.</b> Collimator with copper filters.
	<b>Point 10.</b> Table top transversal travel 30cm or more (+15 cm),	<b>Point 10.</b> Table top transverse travel 20cm ( $\pm$ 10 cm),
	<b>Point 11</b> Table top longitudinal travel 160 cm or more (+80 cm).	<b>Point 11</b> Table top longitudinal travel ( patient coverage) 140 cm or more
	<b>Point No. 12</b> Tilttable table from vertical to -15 Degree or more with automatic stop at Horizontal, Vertical and head down position.	<b>Point No. 12</b> Tilttable table from vertical to -12 Degree or more with automatic stop at Horizontal, Vertical and head down position.

**Turnkey work:** In the civil works Modifications/Renovations in the existing rooms by the supplier/vendor shall be executed as per approved makes specified in Annexure -A.

The walls of whole Complex should be finished acrylic/plastic emulsion (for approved makes refer Annexure -A) and should be finished with vitrified tiles (for approved makes Annexure -A) up to five feet height from the floor. Colour as approved by Purchaser/HSCC shall be provided.

The flooring in the Fluoroscopy/DR complex should be as per AERB regulations. Flooring in all rooms shall be of vitrified tiles of 80 x 80cm size or other close appropriate size of reputed makes (for approved makes refer Annexure -A). Colour as approved by Purchaser/HSCC shall be provided.

Whole area of Complex as in the layout plan approved by the AERB shall be finished with fire resistant false ceiling material (for approved makes refer Annexure -A).

All the doors should be provided with necessary fittings with hydraulic type door closures (for approved makes refer Annexure -A) and with Motorised locks (for approved makes refer Annexure -A).

Main door of the complex in the corridor shall be in glazed aluminium powder coated with adequate thickness of glass with etching work wherever required. Colour of aluminium powder coating shall be got approved from Purchaser/HSCC before execution of works. All doors should be lead protected as per the AERB guidelines.

Lead Glass window of adequate size will be fixed as per AERB guidelines in the console room. Proper signage both external and internal to be done.

**Electrical work:** The firm is required to specify load requirement i.e. required for the unit, the air conditioning, room lighting and accessories, if any. The electrical works should be as per approved makes mentioned in Annexure -A. The electrical works should have minimum two separate Earthing with copper plate is to be provided for the each equipment and air-conditioning equipment as per equipment requirements. The use of earth leakage circuit breaker will be as required.

A distribution panel of appropriate capacity is to be provided by hospital. The load shall also be provided by the hospital. From the substation of the hospital to the distribution panel, cable of appropriate size shall be provided & fixed by the hospital. Vendor shall do cabling from distribution panel up to the equipment. The switch gears (MCBs / ACBs/ MCCBs), L.T. distribution board for MCBs etc. (for approved makes refer Annexure -A). Electrical wires should be of copper of different capacity as per the load (for approved makes refer Annexure -A).

Modular range Switches / Sockets of approved makes as per Annexure -A should be provided and fixed as per requirement. LED lights of suitable illumination should be provided of Phillips/GE/ Crompton/Syska make.

**Air conditioning:**

Split Air conditioners of reputed make (for approved makes refer Annexure -A) to be provided by the vendor in whole complex as per requirements (to maintain appropriate temperature in the main equipment room & other rooms) and as per regulations of AERB.

Standby additional split air conditioners of appropriate strength/capacity (tonnage) to be fixed in the main equipment room.

Hygrometer Nos.1 to be provided.

In-built or External De Humidifier in Equipment, Console and Examination rooms to be provided as per room layout.

**Fire Protection**

Non water based fire protection is to be integrated as per requirement. Fire extinguishers of appropriate types (of approved makes as per Annexure -A) should be fixed in different rooms as per requirement. Heat detectors/hooters/photoelectric/smoke detectors (of approved makes as per Annexure -A) shall be provided in all the rooms and corridors as per requirements. In case the expiry date of fire extinguishers is before the completion of comprehensive warranty period, extra set(s) of fire extinguishers will be supplied by the vendor till the completion of the comprehensive warranty period. Besides, any works required as per statutory/Myanmar Fire Services norms shall be executed by the vendor.

The vendor to also install the following:

Audio visual Music systems for patient waiting areas.

Adequate Pest, insect and rodent control system to be provided and installed to ensure that area remains insect, pest and rodent free.

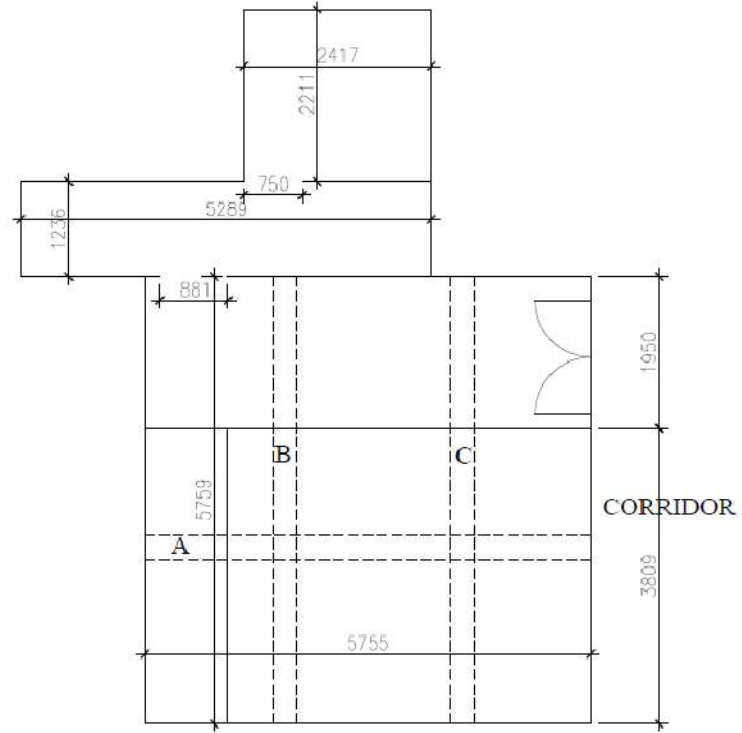
Music and Public Address system for calling/ informing the patients in the waiting areas.

Furniture:-

Following furniture (Godrej/Debono/Delite) will be provided:

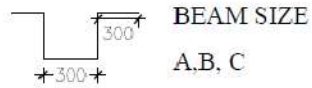
- Chairs with castors and armrests 2 nos.
- Overhead Storage (1.2x0.4x.6m) for CD storage 1 no.
- Medicine Trolley 1 No.

**Package - 4 Room Layout - 500mA high frequency unit with Fluoroscopy and with image intensifier**



TOTAL HEIGHT=3791

CLEAR HEIGHT=3535



## LIST OF APPROVED MAKES : CIVIL WORKS

S. No	Material	MANUFACTURERS
1	Doors & Windows fixtures/ Fittings	<i>Dorma, Godrej, Ozone, Austavision</i>
2	Door Closer / Floor spring	<i>Ozone, hettich, Dorma, Godrej,</i>
3	Aluminium Sections.	Hindalco, Jindal, <i>BALCO, Alom</i>
4	Clear Glass/ Clear Float Glass/ Toughened Glass	Saint Gobain(SG), Modi, <i>Asahi, Glaverbel</i>
5	Laminates	Formica, Decolam, Century, Marino, <i>Greenlam</i>
6	Synthetic Enamel Paints	Berger, Asian, ICI , Nerolac, Shalimar
7	Oil Bound Distemper	Berger, Asian, <i>ICI</i> , Nerolac, Shalimar
8	Cement Paint	Snowcem plus, Berger, Nerolac, <i>Asian, ICI</i>
9	Plastic Emulsion Paint	<i>Berger</i> , Asian, ICI , Nerolac, Shalimar
10	Other Paints/Primers	Berger, Asian, ICI , Nerolac, Shalimar
11	MS Pipe/ Sections	Jindal Hisar, Prakash-Surya, BST, Kalinga, Tata
12	Polycarbonate Sheets	GE, <i>Macrolux, Plastic, Vergola, Skyarch, Polytechno</i>
14	Wooden Fire Check Doors	Navair, Pacific Fire Control, Kutty Promat, Sukri
15	Metal Fire Check Doors	Navair, Shakti- Met, Godrej, Sukri, Pacific Fire Control
16	Ceramic Tiles	Johnson, Somany, Kajaria, Nitco, <i>Bell, Hindustan,</i>
17	Pre-Laminated Particle Board	Novopan, Greenlam, Kitlam, Marino, <i>Century, Archid ply</i>
18	Flush Door Shutters	Century, Kitply, Green Ply, <i>Duro</i>
19	Glazed Tiles	Bell, Somany, Johnson, Kajaria, <i>Nitco</i>
20	PVC Water Stops	<i>Prince/Supreme/Finolex//BASF</i>
21	White Cement	Birla White, J.K., <i>Grasim</i>
22	Dash Fasteners./Anchor bolts	Hilti, Fischer, Bosch,
23	Stainless Steel Bolts, Washers and nuts	Kundan , Puja , Atul
24	6mm thick Reflective Glass	Glaverbel, Glavermas, Saint Gobain, <i>Asahi</i>
25	Door Locks	ACME, Godrej, <i>Dorma</i>
26	Door Seal – Woolpile Weather Strip/ <i>Acoustic seal</i>	Anand -Reddiplex, <i>Enviroseal, Viper</i>
27	Aluminium Grill	Hindalco, Jindal
28	Vitrified Tiles	Naveen, Bell, Kajaria, Somani, <i>Nitco, Johnson, Euro</i>

29	Aluminium Cladding sheets	Alstrong , Alpolic, Alucobond, Alstone International, Aludecor Lamination
30	Stainless steel D-handles	D-line, Giesse, Dorma, Dorset, ozone
31	Stainless Steel Pipes/Flats	304 Grade (as approved by Engineer)
32	Structural Steel	TATA, SAIL, RINL, JINDAL
33	Epoxy Flooring/ wall coating	Fosrock, Beck, Famaflor, <i>Araldite, STP, Sika, BASF</i>
34	Ply board	Greenply, Kitply, Century, Archid, Marino, <i>Duro</i>
35	PVC Flooring	LG, Tarkett, Responsive , <i>Armstrong, Gerflor</i>
36	SS Railing	<i>Ozone, D-Line, Jindal,</i>
37	Fire rated door closer/Mortice Lock/ Door Co-ordinator	Dorma, Becker F.S. Australian or approved equivalent
38	Gypsum Board System	Gyproc (Saint Gobain), Lafarge, Boral, <i>Hilux,, Aerolite</i>
39	Adhesive for Door Work	<i>Fevicol/ Vamicol/ Dunlop/ Piditite/ Sika/ Thermoshield</i>
40	Epoxy Paint	<i>Nerolac/ Shalimar/ cico/ Fairmate/ sika/ BASF/ Berger/ Asian/ Pidilite</i>
41	Polysulphide sealant	Pidilite/ Fosroc/ Choksey/chematal rai/ cico/ sika, MC Bouchemie, BASF, STP
42	Glass Doors (Motorised)	<i>DORMA/ Hafle/ Ozone</i>
43	Calcium silicate boards	<i>Hilux/ Aerolite, Armstrong</i>
44	Calcium Silicate Tiles	<i>Hilux/ Aerolite, Armstrong</i>
45	Texture Paints	<i>Spectrum/Heritages/ICI Dulux/Asian</i>
46	Wall care putti	<i>J.K. White/Birla/Gyproc wall putty</i>
47	Frameless glass partition fixtures	<i>Dorma/Hafle/Ozone</i>
48	U-PVC Windows	<i>Fenesta, Window Magic, Aluplast</i>
49	Toilet Cubicles	<i>Greenlam, Marino or approved equivalent</i>
	<p>If the makes given in the list are not available, other equivalent makes can be considered subject to approval by the Purchaser/HSCC based on credentials of the company and test certificates of the product, subject to price adjustment.</p> <p>Wherever makes have not been specified for certain items, the same shall be as per BIS and as per approval of Purchaser/HSCC.</p>	

LIST OF APPROVED MAKES: PLUMBING WORKS

SI.No	Material	Relevant IS Code	MANUFACTURERS
1	Vitreous China Sanitary ware	2556	Kohler, Roca, American Standard, Toto
2	White Glazed Fire Clay Sink	771	Sanfire, Cera, Neycer, Hindware.
3	Stainless Steel Sink		Jayna, <i>Neelkanth</i> , Commander, Nirali
4	Plastic seat cover of W.C	2548	Kohler, Roca, American Standard, Toto
5	Geyser		Racold, Venus, Voltas, Usha Lexus, Jaguar, Havells

6	C.P. Fittings Mixer/Pillar taps Washers, C.P. brass accessories ,CP Angle Valve, Bibcocks, CP waste	1795/4291/4827	Kohler, Roca, American Standard, Toto
7	Centrifugally /Sand cast iron pipes & fittings	3989/1729	Neco, Hepco, SKF
8	G.I. Pipes	1239 Part I	Jindal-Hissar, Tata, Prakash-Surya
9	G.I. Fittings	1239 Part I	Unik, K.S., Zoloto, R
10	Stoneware pipes & Gully Traps	651	IS Marked pipes
11	Mirror		Atul, Modi guard, Asahi, Saint Gobain
12	Hand drier		Kopal, Automat, Euronic, Utech
14	Insulation of Hot water pipes		Vidoflex insulation, Superlon, Thermaflex, Kaiflexkaimenn
15	D.I pipes		Jindal, Tata, Electrosteel., Kesoram
16	PVC/UPVC pipes & fittings		Finolex , Prince,
17	Infrared Sensor operated Faucets/Urinals		Kohler, Roca, American Standard, Toto
18	Gratings, Strainers, Cleanouts etc		Neer Brand (Sage Metals), ACO
19	Decorative bath room fittings		Jaquar (Florentine range), Aquabaths, Kohler
20	HDPE pipes and fittings		Oriplast, So-Soon, Finolex, Gebreti, Nosil,
21	CPVC pipe, fittings and Solvent		Flowguard, Astral, Prince,
22	Copper Pipe		Raj Co., Maxflow, Mehta Tubes
23	Copper Fittings		Viega, IBP, Yorkshire, Mehta Tubes, Rajco
24	Lab drainage		Viega, Duraline, Rex
25	Lab Fittings		Vijay, Viega
26	SS pipe(EN-10312) & press type fitting		Viega, Jindal
27	Oxilyte (Mixed oxident)		Oxybee Solutions, I2M Technologies, Faith Innovations

Note: Wherever makes have not been specified for certain items, the same shall be as per BIS and as per approval of Purchaser/HSCC.

#### LIST OF APPROVED MAKES : FIRE FIGHTING WORKS

Sl.No	Material	Relevant ISI Code	MANUFACTURERS
1	G.I./M.S. Heavy class pipe	1239/3589	Jindal-Hissar, Tata, Prakash -Surya,
2	Portable Fire Extinguisher	2171	Minimax, Safex, Ceasefire, Newage,
3	Sprinkler Heads		
4	Pendent type		Tyco, Viking, HD, Grinnel
5	Side wall type		Tyco, Viking, HD, Grinnel
6	Sprinkler Side wall extended through		Tyco, Viking, HD, Grinnel
7	Standby battery lead acid		Exide, Standard, Amco
8	Cables		As per Electrical Works
9	G.I. Fittings	1239 Part I	Unik, K.S., Zoloto, R
10	DI pipes		Jindal, TATA, Electrosteel, Kesoram

11	Pipe coat material (Pipe protection)	<i>Pypkote Integrated water proofing co. Madras/ coaltek Rustech products (P) Ltd. Syndcate Enclave, Dabri/Makphall</i>
12	Fire Man's Axe	<i>Safeguard/safex/Newage/Gunnebo</i>

Note: Wherever makes have not been specified for certain items, the same shall be as per BIS and as per approval of Purchaser/HSCC.

#### LIST OF APPROVED MAKES FOR ELCTRICAL SYSTEM

Contractor shall use the materials of approved make as indicated below unless specified in BOQ or as approved by the HSCC electrical incharge. The contractor shall ensure the correct selection of the approved make meeting the specifications and application duties. Before placing order for procurement, the sample of approved make shall be got verified for its suitability to the specification and application duty. However, HSCC electrical engineer (approving authority) reserves the right to opt for the best preferred listed make. The contractor shall quote the rate for the material and equipment as per the list of approved makes and equipment as per the list of approved makes. In the event of the contractor wants to use alternate makes other than those stipulated for any reason, the contractor can send a proposal after ensuring that what he proposes at the least meets both the quality and safety standard of the stipulated makes, and the financial benefit that will accrue to the client. He shall also stand full guarantee to his alternate proposal. The alternate makes can be used only after an approval accorded by the client/HSCC., whose decision will be final in this matter. Any financial implication incurred related with inspection will be borne by contractor.

S.No.	Item Description	Make list
1	Timers in Distribution board	Legrand/ Hager/ Siemens/ ABB/ GE
2	MCB distribution Boards	L & T /Hager/ MDS/Legrand/ Siemens, ABB/GE/ Schenieder (MG)
3	MCB	L & T /Hager/ MDS/Legrand/ Siemens, ABB/GE/ Schenieder (MG)
4	Rewirable porcelain wire	CPL, KEW
5	Data and Voice wire	Finolex, Delton, Skyton, Anchor, L&T, AT&T, Avaya
6	RCCB	L & T Hager/ Legrand/ Siemens, GE/Schenieder (Merlin –Gerin)
7	ELCB/ELMCB	Merlin Gerin-multi 9, Legrand, Hager, Siemens
8	11 KV LT XLPE cables	RPG/ Polycab/ NICCO/ UNIVERSAL/Rallison/KEI/Skytone/ Havells
9	Copper Control cable	Finolex/ Polycab/ NICCO/ Universal/ National/ Rallison/RR Cable
10	Cable Joints (Heat Shrinkable)	Raychem/3M/Cabseal
11	Cable Trays	Steelways/ Bharti/ Unitech /Maheshwari/or approved by HSCC

12	Galvanized/PVC Raceways and raceways accessories	Steelways/ Bharti/ Schneider(MG)/Legrand
13	Light fitting	Philips/ GE/ Crompton Greaves
14	fancy LIGHT FITTING	Anchor(Panasonic )/ Twinkle/Decon/Ankur
15	Lamps	Philips/ Osram/ GE/Anchor (Panasonic)/Perlite
16	GI / MS conduit ISI marked	BEC/ AKG/ Steel Kraft
17	PVC conduit	BEC/ AKG
18	Steel conduit accessories (ISI as approved sample)	Sharma sales corporation, super sales corporation or equivalent.
19	Modular Metal box for switch /socket	Havells/ MK/MDS/Anchor Roma/Northwest
20	Copper conductor FRLS PVC insulated wires ISI marked	National/ Finolex / R R cable/Rallison/Skytone/lap/Bonton
21	Modular Switches & sockets Outlets	Havell's ( Crabtree)/ MK- Wraparound/Hagger/Wipro Legrand (Myrius/ Anchor-Roma(Tersa,woods,viola)/ Northwest
22	Metal clad Socket outlets With boxes	L & T Hager/ Siemens/ Merlin Gerin/ ABB MDS / BCH /Havells
23	UPS system	PCI LTD/ Siemens/ Etone powerware/Emerson/APC (Schneider)
24	Electronic Ballast	Philips/ Wipro/Osram / Bajaj
25	Ceiling fans	Crompton Greaves/ Bajaj/ Orient/ Alastom/ Usha
26	Main PC with CPU monitor	HP/ Compaq/Del
27	PVC Tape	Steel Grip
28	Batton Holder,Angle holder, Ceiling Rose	Anchor
29	Exhaust Fan with Gravity Louvers	Usha Lexus/Orient/ Crompton/Industrial-Almonard/ GEC
30	TV Cable- Co axial	Finolex, airtech, bhansali
31	Chemical Earthing	Ashlok, Erico, Pioneer, Nimbus,JK Earthing
32	LCD/LED Monitor	Sony, Panasonic, Samsung

#### LIST OF APPROVED MAKES AND MANUFACTURERS

The subcontractors/makes/brands of equipment listed below are approved for installation.

All items to be used in the works samples, catalogues and specifications are to be submitted by the contractor for approval of the Purchaser/HSCC. Only approved makes shall be used in the works. The approved samples shall be kept in the custody of the Purchaser/HSCC for comparison.

S.No	Material/Item	Approved Makes
1	Precision AC units	Emerson/Blue box/Stulz/Hiross
2	Window/split AC	Carrier /Hitachi/Voltas/Bluestar/Daikin/Ogeneral
3	VRV/VRF	Carrier /Hitachi/Daikin/Ogeneral
	Ducting & Grilles	
4	Factory fabricated duct	Zeco/ Ductofab/Rolastar/Technofab



5	G.I. Sheet Metal Duct	Jindal /National/ Tata/Sail
6	Spiral duct	Atco/Seven Star
7	Grilles/Diffusers/Volume Controller	Ravistar/Caryaire/ Mapro/Dynacraft/Airmaster
8	Fire Dampers UL listed	Caryaire/Dynacraft / Ravistar/Ruskin
9	Sound Attenuator	Caryaire/Dynacraft/Ravistar/Trox
10	G.I. Sheets	TATA/SAIL/Jindal/Bhushan Steel
11	Aluminium Sheets	Balco/Nalco/Hindalco
12	Stick Pins	Prima Seal/Air flow
	Pipes	
13	G.I.	ITC/ Jindal Hissar/Tata/SAIL/HSL
14	M.S. upto 150 mm	ITC/ Jindal Hissar/Tata/SAIL/HSL
15	M.S. 200 mm and above dia factory rolled	ITC/ Jindal Hissar/Tata/SAIL/HSL
	Valves	
16	Butterfly Valves	Advance/Audco
17	Motorised butterfly valve(actuator)	Belimo/Honeywell/Invensys/siemens
18	Non Return Valve	Advance/Kirloskar/Audco
19	Balancing Valves	Advance/Audco/Danfoss/Honeywell
20	Gate/Globe Valves	Leader/Divine/Sant/Bankim Sarkar /Zoloto
21	GM valve upto 40mm	Leader/Divine/Sant/Bankim Sarkar /Zoloto
22	Ball Valve with Y strainer	Rapid Control/Sant/Leader/Zoloto
23	Pressure independent Balancing valve	Danfoss/Flowcon/TA
	Accessories	
24	Y-strainer	Emerald/Sant/Rapid cool
25	Pressure Gauge	Fiebig/Emerald/H Guru/Japsin
26	Thermometer	Fiebig/Emerald/H Guru/Japsin
27	Flow Switch	Rapid Control/Anergy
28	Automatic Air Vent	Rapid Control/Anergy
29	Suction Guide	Anergy/ Rapid Control/Flowcon
30	Filters(pre,fine Hepa)	Thermadyne/Spectrum/Kirloskar /Anfilco/Johnflower/Dynafilter
	Insulation	
31	Expanded Polystyrene	Beardsell Ltd./ BASF/Styrene Packing/ Indian Packaging Industries/ Lloyd
32	Glass Wool	FGP Ltd./UP Twiga/Kimmco / Owens Corning
33	Polyurethane Foam	Malanpur /Superurethane
34	Crossed linked Polyethylene Foam	Trocellene / Aeroflex/Armacell/
35	Closed Cell Elastomeric Insulation	K-flex /Vedoflex/Armacell
36	Non woven fibre material	Mikron/ Du pont
37	Mineral wool	Rockwool India Pvt Ltd,
38	Pre-moulded PUF section for pipe & pipe supports	Malanpur/ Lloyd
39	Fibreglass rigid Board/Pipe section	FGP Ltd./UP Twiga/Kimmco / Owens Corning
40	Aluminium Tape	Johnson/Birla 3M/Garware

41	Thermostats	Honeywell/Johnson controls/Belimo/Danfoss/Siemens/Oventrop
42	Humidistat	Honeywell/Johnson control/ Belimo/Danfoss
	Miscellaneous	
43	V Belt	Dunlop/Fenner
44	Anchor fastners	Fischer/Hilti
45	Dash fastner	Fischer/Hilti
46	Welding rods	Advani/L&T
47	Wire Rope duct supporting arrangement	Gripple
48	Flexible pipe connection	Dunlop/Kanwal/resistoflex
49	Hessian Cloth (fire rated)	Navair/Pyrogaurd
50	Vibration isolator	Resistoflex, Dunlup, Kanwal
51	Copper Refrigerant Piping	Diamond/Star/Rajco

### Package – 5 Blood Gas Analyzer

<b>Bidder Query</b>	<b>Clarification</b>
The cost of spares will add up in main equipment for 10 years. It should be 1-2 years	Back to back warranty to be taken by the supplier from the principal, to supply spares for minimum 10 years.
Please confirm that demonstration will be in India	Demonstration (if required by Purchaser) will be in India during the bid evaluation, however the same should not be linked with the third party inspection requirement ( after the placement of order) before the dispatch of the equipment, third party inspection has to arranged as per the as per GCC Clause 7, 12.4, 27(i)
Please confirm the cost of reagent to be included with main equipment.	Only the cost of reagent for 1000 sample startup kit will be included with main equipment. Apart from above the bidder has to quote for the cost of reagents as optional item which will be valid for two years. The cost of optional items will not be included in evaluation.

### Package – 8 (A) Basic Bone Set ( All Imported)

	<b>Tender Specification</b>	<b>Amended/ Read As</b>
	Wire bending pliers – 2 each of blunt tip and sharp tip One all	Wire bending pliers – 2 each of blunt tip and sharp tip
	• Bone curette	• Bone curette
	ii. Maartini currettes all size 2 sets	ii. Maartini currettes all size 1 each
	Nylon Faced Hammer 20 Nos. Qty 2	Nylon Faced Hammer Qty 2 Nos.
	• K-wire cutter (Capacity 4mm) with Replaceable tungsten carbide blades with rubber jaws set should consist of :  i. K-wire cutter 4 ii. Spare blades 4 pairs with screws iii. Spare robber jaws 4 pairs with screws iv. Allen keys 4 Nos	Deleted

**Package -8 (B) Instruments and Implants for 7.0 mm Cannulated Screws**

	<b>Tender Specification</b>	<b>Amended/ Read As</b>
	<ul style="list-style-type: none"> <li>Cannulated screws 7.0 mm self drilling/tapping full thread length with following lengths 60-110 mm with 5 mm increments</li> </ul>	Deleted

**Package 8 (C) HEMIREPLACEMENT SET-austin moore prosthesis WITH IMPLANTS**

	<b>Tender Specification</b>	<b>Amended/ Read As</b>
	3.1 Instrument Set should consist of the following: <b>quantity as per user demand</b>	Instrument Set should consist of the following:
	<b>8 Documentation</b> 1. User/Technical/Maintenance manuals to be supplied in English. 2. Certificate of calibration and inspection. 3. List of Equipments available for providing calibration and routine Preventive Maintenance Support. as per manufacturer service/ maintenance manual. 4. List of important spare parts and accessories with their part number and costing. 5. Log book with instructions for daily, weekly, monthly and quarterly maintenance checklist. The job description of clearly spelt out. 6. Compliance Report to be submitted in a tabulated and point wise manner clearly mentioning the page/para number with authenticated catalogue/manual, without which it will not be considered	<b>8 Documentation</b> 1. User/Technical/Maintenance manuals to be supplied in English.

**Package – 8 (D) INTRAMEDULLARY NAILING SET WITH FLEXIBLE REAMERS**

	<b>Tender Specification</b>	<b>Amended/ Read As</b>
	Package – 8 (D) INTRAMEDULLARY NAILING SET WITH FLEXIBLE REAMERS (All Imported)	Package – 8 (D) INTRAMEDULLARY NAILING SET WITH FLEXIBLE REAMERS
	2.2 Locking screw appropriated for the nail and site to be provided. As specified	Deleted from here and will be part of Package 8 (J)
	2.3 Anatomic precurvature required as appropriate for different nails as anterior bow, coronal angulation for trochanteric entry nail for femur etc and same apply for tibia.	Deleted from here and will be part of Package 8 (J)
	<b>7 Standards, Safety and Training</b> 5. Material should be of high quality used for medical equipments.	<b>7 Standards, Safety and Training</b> 5. Material should be of high quality used for medical equipments SS 316L

**Package 8 (H) Manual Hand Dermatome Set**

	<b>Tender Specification</b>	<b>Amended/ Read As</b>
	Manual Hand Dermatome Set	Manual Hand Dermatome Set/ Skin graft Handle

**Package -8**

**( J ) INTERLOCKING NAILS AND SCREWS**

	<b>Tender Specification</b>	<b>Amended/ Read As</b>
	<b>Femoral (Recon style/universal) 2 each</b> 9 mm Dia. 320, 340, 360, 400, 420, 440 10mm Dia -do- 11 mm Dia. -do- 12 mm Dia -do-	<b>Femoral (Universal) 2 each</b> 9 mm Dia. 320, 340, 360, 400, 420, 440 10mm Dia -do- 11 mm Dia. -do- 12 mm Dia -do-
	<b>Tibital (Recon style/ Universal) 2 each</b> 8 mm Dia. 280, 300, 320, 340, 360, 380 9 mm Dia -do- 10 mm Dia. -do- 11 mm Dia -do-	<b>Tibital (Universal) 2 each</b> 8 mm Dia. 280, 300, 320, 340, 360, 380 9 mm Dia -do- 10 mm Dia. -do- 11 mm Dia -do-
	<b>Humerus (solid and /cannulated) 2 each</b> 6 mm Dia. 200, 220, 240, 260, 280, 300 7 mm Dia -do- 8 mm Dia. -do-	<b>Delete</b>
		Add: Locking screw appropriated for the nail and site to be provided. As specified  Add: Anatomic precurvature required as appropriate for different nails as anterior bow, coronal angulation for trochanteric entry nail for femur etc and same apply for tibia.
		Add: 1. Should be manufactured by company which has license of Drug Controller of India and conforms to standards laid down by the Drug Controller of India vide notification of Ministry of Health & family welfare 2. Manufacturer should have ISO certification, GMP and Notified EC Certification for quality standards. 3. Comprehensive training for lab staff and support services till familiarity with the system on site. 4. Comprehensive warranty for 1 years and long shelf life for implants . 5. Material should be of high quality used for medical equipments i.e SS 316L

**Package -8 (L) DYNAMIC HIP SCREW INSTRUMENT SET ( All Imported)**

	<b>Tender Specification</b>	<b>Amended/ Read As</b>
	Centering sleeve for 430.050	Centering sleeve
	Guide shaft for 430.100	Guide shaft

All other terms and conditions of the bid document shall remain unchanged.

S/d  
Joint Secretary –DPA (III)  
Ministry of External Affairs,  
New Delhi